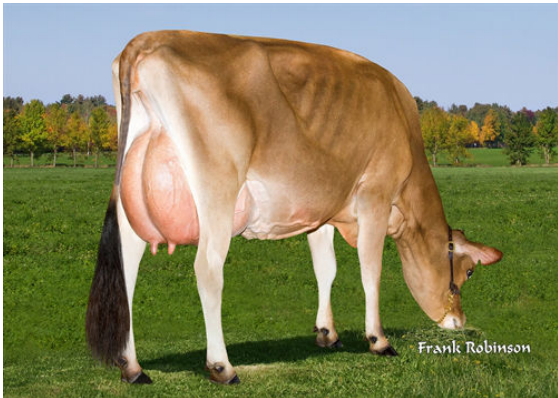




SUNSET CANYON MAXIMUM  
 BW CENTURION IRIS K347 {6} EX-95%-9YR-USA  
 SOONER CENTURION  
 BW DC SHELLY N275 {5} EX-90%-3YR-USA  
 DUNCAN CHIEF  
 BW HERMITAGE A324 {4} VG-80%-2YR-USA



BW RENEGADE ABBY



BW RENEGADE RENEE



THREE VALLEYS RENEGADE F MAID

**GJPI 24** BBR 100 JH1F JNSF

Reg. #: JEUSAM115883929 aAa: 261345 DMS: 246  
 Born: 01/31/2008 Kappa Casein: BB Beta Casein: A2B

**PRODUCTION** 846 Herds 9738 Dtrs 99% Rel MACE-G / 08-24

| Milk lbs | Fat lbs  | Fat %   | Protein lbs | Protein % |
|----------|----------|---------|-------------|-----------|
| -567     | 30       | +0.31   | -2          | +0.10     |
| NM\$ 130 | CM\$ 138 | FM\$ 60 | GM\$ 212    | DWP\$     |

Daughter Average (ME) Milk **19,457 lbs** Fat **988 lbs** Protein **723 lbs**

**HEALTH & REPRODUCTION** Immunity

|                         |      |                        |     |
|-------------------------|------|------------------------|-----|
| Productive Life         | -1.2 | Calf Immunity          |     |
| Somatic Cell Score      | 3.01 | Cow Conception Rate    | 2.0 |
| Daughter Pregnancy Rate | 1.4  | Heifer Conception Rate | 0.9 |
| Livability              | -1.0 |                        |     |
| Heifer Livability       | 0.6  |                        |     |

**CONFORMATION** 506 Herds 3737 Dtrs 99% Rel MACE-G / 08-24

|                    |      |
|--------------------|------|
| PTAT               | -0.9 |
| Jersey Udder Index | 0.2  |

|                     |           |      |
|---------------------|-----------|------|
| Stature             | Short     | -1.3 |
| Strength            | Frail     | -0.8 |
| Dairy Form          | Tight Rib | -0.4 |
| Rump Angle          | Sloped    | +1.0 |
| Rump Width          | Narrow    | -0.7 |
| Rear Legs Side View | Sickle    | +0.8 |
| Foot Angle          | Steep     | +0.2 |
| Fore Attachment     | Loose     | -0.4 |
| Rear Udder Height   | Low       | -0.2 |
| Rear Udder Width    | Narrow    | -0.6 |
| Udder Cleft         | Weak      | -1.1 |
| Udder Depth         | Deep      | -2.4 |
| Fore Teat Placement | Close     | +0.5 |
| Teat Length         | Short     | -0.6 |
| Rear Teat Rear View | Close     | +0.2 |
| Rear Teat Side View | Close     | -1.9 |