



WESTCOAST ALCOVE
 MYSTIQUE LAMBDA ANIS VG-89-4YR-CAN 1*
 FARNEAR DELTA-LAMBDA
 MYSTIQUE EXTREME ABRICOT EX-94-4E-CAN 6*
 SILVERRIDGE V EXTREME
 MYSTIQUE MCCUTCHEN APRIL EX-93-2E-USA 3*

GTPI 2734

TD TR TL TY MWT TV 99%-I HH1F HH2F HH3F HH4F HH5F HH6F HCDF HMWF

Reg. #: HOCANM14259316 aAa: 324156 DMS: 234,246
 Born: 06/13/2022 Kappa Casein: AA Beta Casein: A2A2

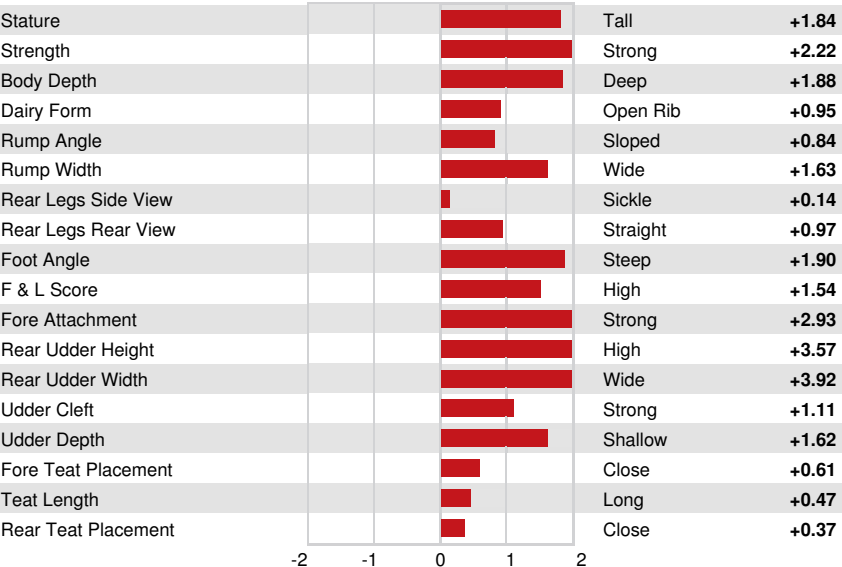
PRODUCTION		G Herds	G Dtrs	82% Rel	CDCB-G / 04-24				
Milk lbs	996	Fat lbs	77	Fat %	+0.13	Protein lbs	38	Protein %	+0.02
NM\$	510	CM\$	515	FM\$	471	GM\$	484	DWP\$	630
Feed Efficiency	155	RFI	-28	Feed Saved	-277	Methane Efficiency	102		

HEALTH & REPRODUCTION Immunity 98

Productive Life	1.5	Calf Immunity	100
Somatic Cell Score	2.97	Cow Conception Rate	0.2
Daughter Pregnancy Rate	-0.8	Heifer Conception Rate	1.7
Livability	-1.6	Sire Calving Ease	2.4% 63% Rel
Heifer Livability	0.8	Daughter Calving Ease	2.9% 62% Rel
Fertility Index	-0.1	Sire Stillbirth	7.2%
		Daughter Stillbirth	6.9%

CONFORMATION G Herds G Dtrs 81% Rel HAUSA-G / 04-24

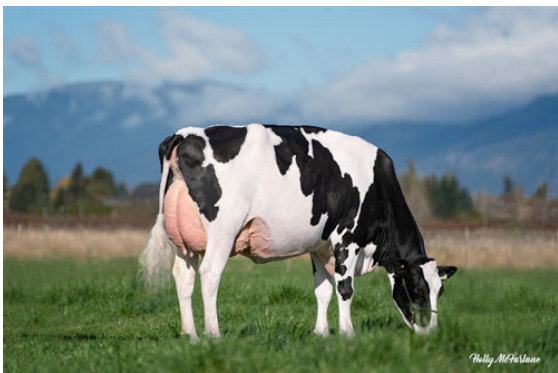
PTAT	2.66	Body Composite	2.00
Udder Composite	2.43	Dairy Composite	1.43
Feet & Legs Composite	1.14		



MYSTIQUE EXTREME ABRICOT
 GRANDDAM



MYSTIQUE LAMBDA ANIS
 DAM



MYSTIQUE LAMBDA ANIS
 DAM