



PEN-COL JANGLE
 PROGENESIS ZAZZLE TWIGGY VG-87-3YR-CAN
 PEAK ZAZZLE
 PROGENESIS ACHIEVER TYPHOON VG-85-4YR-CAN
 ABS ACHIEVER
 OCD JEDI TAYA 37904 VG-86-4YR-USA 1*

GTPI 2930

TD TR TL TY MWT TV 99%-I HH1F HH2F HH3F HH4F HH5F HH6C HCDF HMWF

Reg. #: HOCANM14227136 aAa: DMS: 561,135
 Born: 03/24/2022 Kappa Casein: AB Beta Casein: A2A2

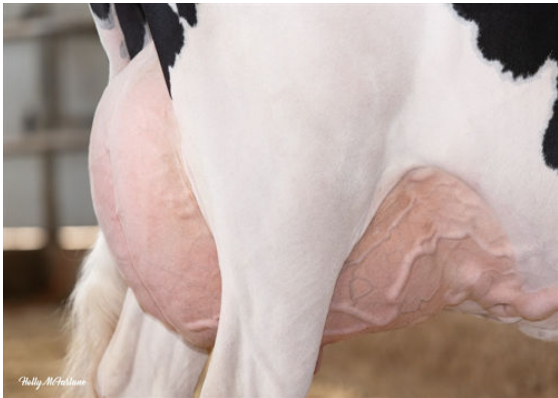
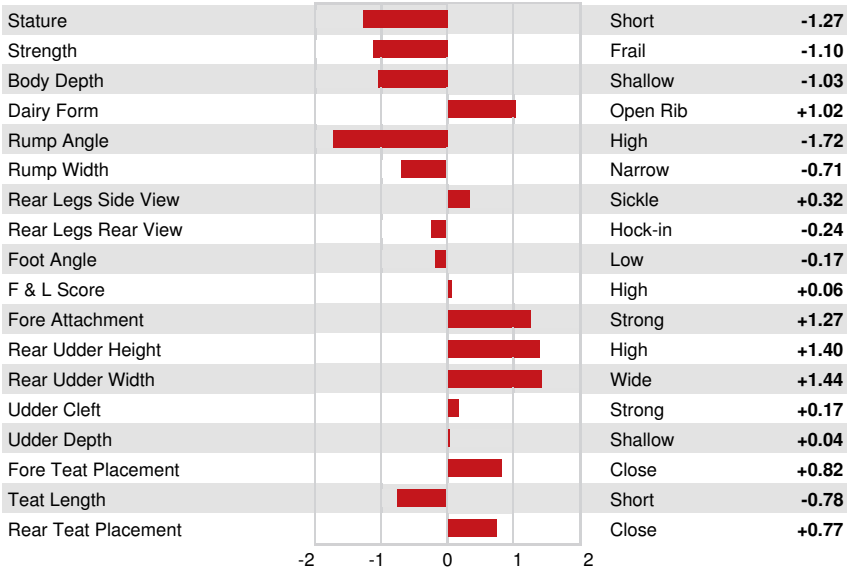
| PRODUCTION | | G Herds | G Dtrs | 82% Rel | CDCB-G / 04-24 | | | | |
|-----------------|------|---------|--------|------------|----------------|--------------------|------|-----------|-------|
| Milk lbs | 575 | Fat lbs | 95 | Fat % | +0.26 | Protein lbs | 36 | Protein % | +0.06 |
| NM\$ | 1038 | CM\$ | 1052 | FM\$ | 944 | GM\$ | 1026 | DWP\$ | 1059 |
| Feed Efficiency | 232 | RFI | 71 | Feed Saved | 197 | Methane Efficiency | 103 | | |

HEALTH & REPRODUCTION Immunity 110

| | | | |
|-------------------------|------|------------------------|--------------|
| Productive Life | 7.7 | Calf Immunity | 110 |
| Somatic Cell Score | 2.80 | Cow Conception Rate | 4.9 |
| Daughter Pregnancy Rate | 2.2 | Heifer Conception Rate | 2.8 |
| Livability | 3.0 | Sire Calving Ease | 1.8% 63% Rel |
| Heifer Livability | 0.8 | Daughter Calving Ease | 2.7% 60% Rel |
| Fertility Index | 2.6 | Sire Stillbirth | 5.1% |
| | | Daughter Stillbirth | 5.2% |

CONFORMATION G Herds G Dtrs 79% Rel HAUSA-G / 04-24

| | | | |
|-----------------------|------|-----------------|-------|
| PTAT | 0.62 | Body Composite | -1.77 |
| Udder Composite | 1.28 | Dairy Composite | -0.63 |
| Feet & Legs Composite | 0.27 | | |



PROGENESIS ZAZZLE TWIGGY
DAM



PROGENESIS ZAZZLE TWIGGY
DAM



OCD JEDI TAYA 37904
THIRD DAM