



PROGENESIS ROYALFLUSH  
 PROGENESIS ZAZZLE PENGUIN  
 PEAK ZAZZLE  
 PROGENESIS YODA PALOMA EX-91-4YR-CAN 1\*  
 CAL-ROY-AL YODA  
 PROGENESIS FORTUNE PALAU VG-87-3YR-CAN 3\*

**GTPI 3023**

TD TR TL TY MWT TV 99%-I HH1F HH2F HH3F HH4F HH5F HH6F HCDF HMWF

Reg. #: HOCANM14226901 aAa: 234165 DMS:  
 Born: 12/01/2021 Kappa Casein: BB Beta Casein: A2A2

PRODUCTION		G Herds	G Dtrs	80% Rel	CDCB-G / 04-24				
Milk lbs	696	Fat lbs	101	Fat %	+0.26	Protein lbs	58	Protein %	+0.13
NM\$	975	CM\$	1004	FM\$	789	GM\$	901	DWP\$	1052
Feed Efficiency	256	RFI	-72	Feed Saved	-9	Methane Efficiency	107		

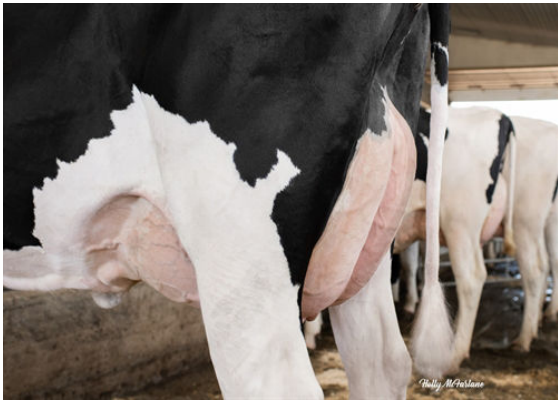
**HEALTH & REPRODUCTION** Immunity 103

Productive Life	4.9	Calf Immunity	95
Somatic Cell Score	2.60	Cow Conception Rate	0.0
Daughter Pregnancy Rate	-1.3	Heifer Conception Rate	-0.2
Livability	1.4	Sire Calving Ease	2.2% 62% Rel
Heifer Livability	1.2	Daughter Calving Ease	2.0% 60% Rel
Fertility Index	-0.6	Sire Stillbirth	6.1%
		Daughter Stillbirth	4.9%

**CONFORMATION** G Herds G Dtrs 78% Rel HAUSA-G / 04-24

PTAT	1.95	Body Composite	0.54
Udder Composite	2.20	Dairy Composite	0.12
Feet & Legs Composite	0.45		

Stature			Tall	+1.31
Strength			Strong	+0.49
Body Depth			Deep	+0.13
Dairy Form			Open Rib	+0.43
Rump Angle			Sloped	+0.05
Rump Width			Wide	+0.46
Rear Legs Side View			Posty	-1.94
Rear Legs Rear View			Straight	+0.69
Foot Angle			Steep	+1.81
F & L Score			High	+0.71
Fore Attachment			Strong	+2.66
Rear Udder Height			High	+3.19
Rear Udder Width			Wide	+2.16
Udder Cleft			Strong	+0.81
Udder Depth			Shallow	+2.53
Fore Teat Placement			Close	+0.44
Teat Length			Long	+0.31
Rear Teat Placement			Close	+0.41



PROGENESIS FORTUNE PALAU  
 THIRD DAM



PROGENESIS ENFORCER PAT  
 FIFTH DAM