



AOT HIGHJUMP
 STANTONS PURSUIT TRAFFIC VG-85-2YR-CAN
 PINE-TREE-I PURSUIT
 STANTONS TOPNOTCH TALENT VG-87-3YR-CAN 2*
 PROGENESIS TOPNOTCH
 STANTONS JEDI ELSA VG-85-2YR-CAN 3*

GTPI 2960

TD TR TL TY MWT TV 99%-I HH1F HH2F HH3F HH4F HH5C HH6F HCDF HMWF

Reg. #: HOCANM13440634 aAa: 423561 DMS:
 Born: 12/01/2020 Kappa Casein: AB Beta Casein: A2A2

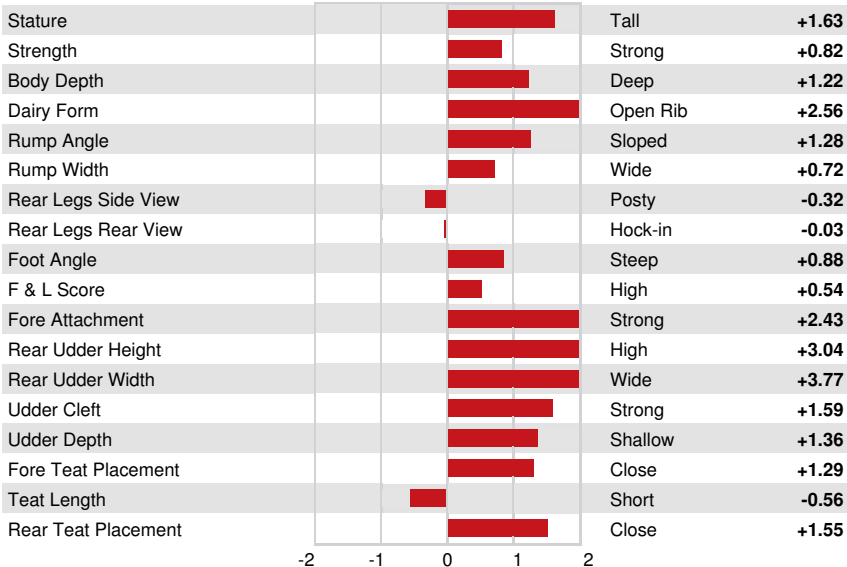
PRODUCTION		G Herds	G Dtrs	82% Rel	CDCB-G / 04-24				
Milk lbs	1405	Fat lbs	103	Fat %	+0.17	Protein lbs	70	Protein %	+0.09
NM\$	918	CM\$	933	FM\$	787	GM\$	828	DWP\$	1078
Feed Efficiency	278	RFI	39	Feed Saved	-35	Methane Efficiency	102		

HEALTH & REPRODUCTION Immunity 104

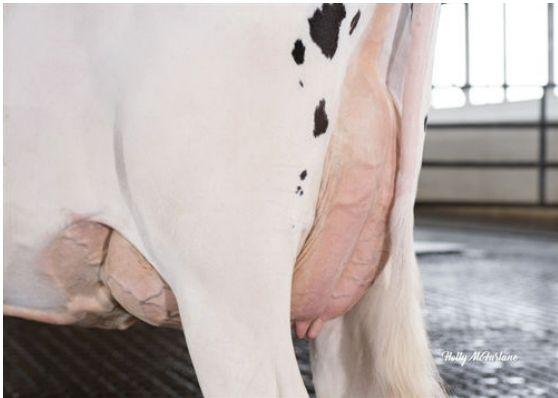
Productive Life	3.7	Calf Immunity	103
Somatic Cell Score	2.99	Cow Conception Rate	-2.0
Daughter Pregnancy Rate	-2.7	Heifer Conception Rate	-0.4
Livability	-0.9	Sire Calving Ease	2.2% 85% Rel
Heifer Livability	0.8	Daughter Calving Ease	1.7% 70% Rel
Fertility Index	-1.7	Sire Stillbirth	6.0%
		Daughter Stillbirth	4.4%

CONFORMATION HAUSA-G / 04-24

PTAT	1.99	Body Composite	-0.02
Udder Composite	2.25	Dairy Composite	1.67
Feet & Legs Composite	0.10		



STANTONS TOPNOTCH TALENT
 GRANDDAM



STANTONS TOPNOTCH TALENT
 GRANDDAM



STANTONS TOPNOTCH TALENT
 GRANDDAM