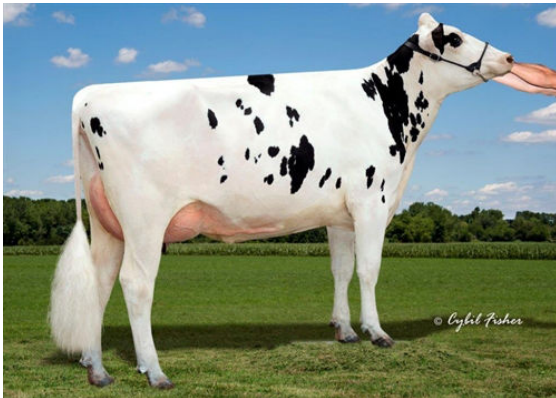




AOT HIGHJUMP
 SIEMERS MILK BOMBI 30485 VG-86-4YR-CAN
 STE ODILE MILKTIME
 SIEMERS BAND BOOMA 27019 VG-85-3YR-USA
 WA-DEL YODER BANDARES
 SIEMERS JOSUPER S-BOOMBA GP-81-2YR-USA DOM



SIEMERS SHAN BOMBIANNA
 FOURTH DAM



GEN-I-BEQ SHOTTLE BOMBI
 FIFTH DAM

GTPI 2969

TD TR TL TY MWT TV 99%-I HH1F HH2F HH3F HH4F HH5F HH6F HCDF HMWF

Reg. #: HOCANM13735406 aAa: 243165 DMS: 135,561
 Born: 07/27/2020 Kappa Casein: BB Beta Casein: A2A2

PRODUCTION		G Herds	G Dtrs	82% Rel	CDCB-G / 04-24				
Milk lbs	1599	Fat lbs	124	Fat %	+0.21	Protein lbs	75	Protein %	+0.09
NM\$	944	CM\$	961	FM\$	815	GM\$	887	DWP\$	863
Feed Efficiency	329	RFI	23	Feed Saved	57	Methane Efficiency	99		

HEALTH & REPRODUCTION Immunity 90

Productive Life	2.0	Calf Immunity	88
Somatic Cell Score	2.90	Cow Conception Rate	-2.7
Daughter Pregnancy Rate	-3.4	Heifer Conception Rate	0.8
Livability	-4.0	Sire Calving Ease	2.7% 75% Rel
Heifer Livability	0.2	Daughter Calving Ease	2.2% 70% Rel
Fertility Index	-2.5	Sire Stillbirth	4.9%
		Daughter Stillbirth	4.7%

CONFORMATION G Herds G Dtrs 80% Rel HAUSA-G / 04-24

PTAT	1.64	Body Composite	-0.53
Udder Composite	1.98	Dairy Composite	1.44
Feet & Legs Composite	-0.14		

