



CLAYNOOK ZASBERILLA
 PROGENESIS HOT VACATION VG-86-4YR-CAN
 PEAK HOTJOB
 FB LULU ACHV VEGAS EX-90-6YR-CAN 1*
 ABS ACHIEVER
 STUNNING-M MONTROSS LULU VG-87-2YR-USA DOM

GTPI 2939

TD TR TL TY MWT TV 99%-I HH1F HH2F HH3F HH4F HH5F HH6F HCDF HMWF

Reg. #: HOCANM13807972 aAa: 243651 DMS: 561,456
 Born: 10/15/2020 Kappa Casein: AB Beta Casein: A2A2

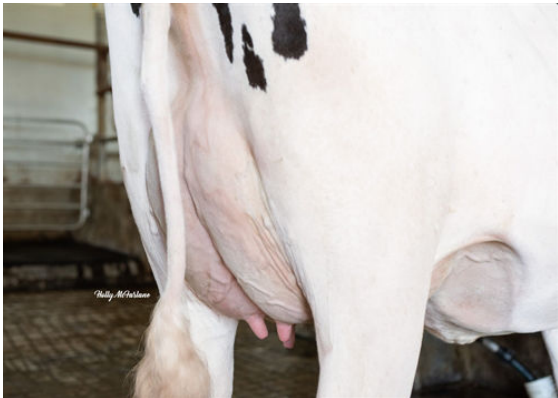
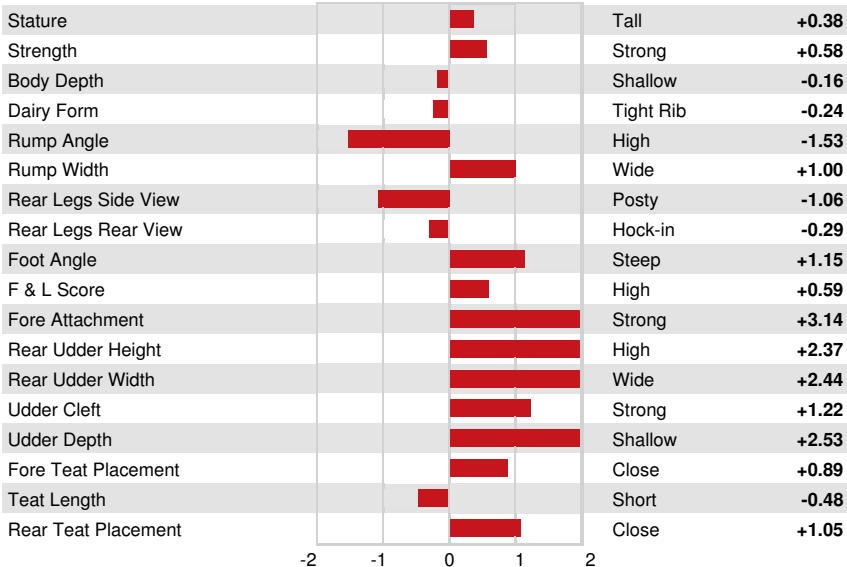
PRODUCTION		G Herds	G Dtrs	82% Rel	CDCB-G / 04-24				
Milk lbs	890	Fat lbs	101	Fat %	+0.23	Protein lbs	53	Protein %	+0.09
NM\$	853	CM\$	873	FM\$	722	GM\$	803	DWP\$	976
Feed Efficiency	234	RFI	14	Feed Saved	-132	Methane Efficiency	99		

HEALTH & REPRODUCTION Immunity 108

Productive Life	3.3	Calf Immunity	102
Somatic Cell Score	2.73	Cow Conception Rate	-0.5
Daughter Pregnancy Rate	-1.2	Heifer Conception Rate	0.5
Livability	0.8	Sire Calving Ease	1.3% 75% Rel
Heifer Livability	0.7	Daughter Calving Ease	1.5% 70% Rel
Fertility Index	-0.8	Sire Stillbirth	5.4%
		Daughter Stillbirth	4.3%

CONFORMATION G Herds G Dtrs 80% Rel HAUSA-G / 04-24

PTAT	1.48	Body Composite	0.78
Udder Composite	2.43	Dairy Composite	-0.30
Feet & Legs Composite	0.35		



FB LULU ACHV VEGAS
GRANDDAM



FB LULU ACHV VEGAS
GRANDDAM