



STANTONS ELDORADO
 PROGENESIS MILKTIME MIRAGE
 STE ODILE MILKTIME
 PROGENESIS MODESTY MISSILE GP-81-2YR-USA 2*
 BACON-HILL PETY MODESTY
 OCD DELTA MISSY EX-93-5YR-CAN 6*

GTPI 2825

VG TD TM TR TL TY MWT TV 99%-I HH1F HH2F HH3F HH4F HH5F HH6F HCDF HMWF

Reg. #: HOCANM13442781 aAa: 432561 DMS: 135,123
 Born: 12/15/2019 Kappa Casein: BB Beta Casein: A2A2

PRODUCTION 18 Herds 62 Dtrs 92% Rel CDCB-G / 08-24

Milk lbs 1037	Fat lbs 64	Fat % +0.09	Protein lbs 50	Protein % +0.06
NM\$ 804	CM\$ 822	FM\$ 705	GM\$ 778	DWP\$ 794
Feed Efficiency 190	RFI -76	Feed Saved 35	Methane Efficiency 100	

Daughter Average (ME) Milk **27,000 lbs** Fat **1,212 lbs** Protein **929 lbs**

HEALTH & REPRODUCTION Immunity **106**

Productive Life	4.7	Calf Immunity	102
Somatic Cell Score	2.67	Cow Conception Rate	1.8
Daughter Pregnancy Rate	0.4	Heifer Conception Rate	2.5
Livability	0.3	Sire Calving Ease	1.4% 90% Rel
Heifer Livability	0.3	Daughter Calving Ease	1.7% 86% Rel
Fertility Index	1.8	Sire Stillbirth	5.4%
		Daughter Stillbirth	4.8%

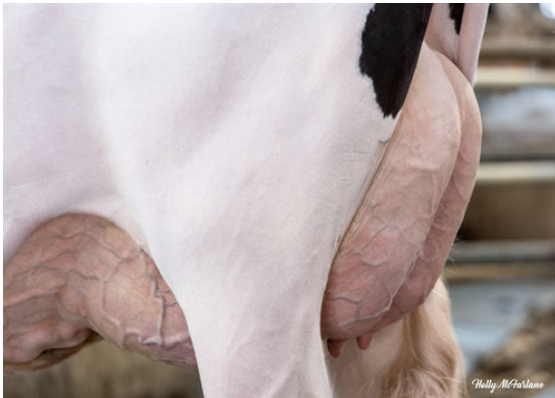
CONFORMATION 10 Herds 37 Dtrs 89% Rel HAUSA-G / 08-24

PTAT	0.85	Body Composite	0.27
Udder Composite	1.89	Dairy Composite	-0.95
Feet & Legs Composite	-0.38		

Stature		Short	-0.22
Strength		Frail	-0.03
Body Depth		Shallow	-0.47
Dairy Form		Tight Rib	-0.58
Rump Angle		High	-0.26
Rump Width		Wide	+0.64
Rear Legs Side View		Posty	-0.86
Rear Legs Rear View		Hock-in	-0.78
Foot Angle		Steep	+0.17
F & L Score		Low	-0.30
Fore Attachment		Strong	+2.02
Rear Udder Height		High	+2.15
Rear Udder Width		Wide	+1.98
Udder Cleft		Strong	+0.81
Udder Depth		Shallow	+1.35
Fore Teat Placement		Close	+0.56
Teat Length		Long	+0.11
Rear Teat Placement		Close	+0.80



WESTCOAST MAHOMES SKY 12669
 DAUGHTER



WESTCOAST MAHOMES SKY 12669
 DAUGHTER