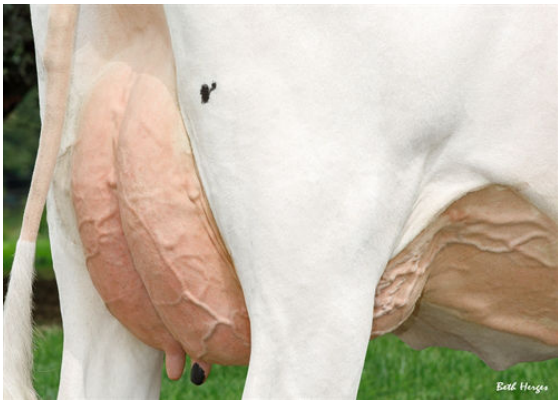




LADYS-MANOR GRNT OOHM
DAM



LADYS-MANOR GRNT OOHM
DAM



LADYS-MANOR GRNT OOHM
DAM



NO-FLA MERRIMAC
LADYS-MANOR GRNT OOHM VG-85-3YR-USA DOM
PROGENESIS GRANITE
LADYS-MANOR MILTN OOMPA
DE-SU MILLINGTON 12074
LADYS-MANOR DORCY ODA EX-93-2E-USA DOM

GTPI 2920

TD TR TL TY MWC TV 99%-I HH1F HH2F HH3F HH4F HH5F HH6F HCDF HMWC

Reg. #: HO840M3200270308 aAa: 432516 DMS: 561,135
Born: 07/07/2019 Kappa Casein: AB Beta Casein: A1A1

PRODUCTION 14 Herds 39 Dtrs 90% Rel CDCB-G / 04-24

Milk lbs 414	Fat lbs 105	Fat % +0.31	Protein lbs 40	Protein % +0.10
NM\$ 873	CM\$ 896	FM\$ 733	GM\$ 804	DWP\$ 1008
Feed Efficiency 223	RFI 12	Feed Saved -86	Methane Efficiency 110	

Daughter Average (ME) Milk **29,134 lbs** Fat **1,385 lbs** Protein **991 lbs**

HEALTH & REPRODUCTION Immunity **103**

Productive Life	4.6	Calf Immunity	97
Somatic Cell Score	2.65	Cow Conception Rate	-0.5
Daughter Pregnancy Rate	-0.9	Heifer Conception Rate	-0.3
Livability	1.5	Sire Calving Ease	1.4% 95% Rel
Heifer Livability	0.7	Daughter Calving Ease	2.1% 71% Rel
Fertility Index	-0.7	Sire Stillbirth	5.2%
		Daughter Stillbirth	4.3%

CONFORMATION 9 Herds 20 Dtrs 87% Rel HAUSA-G / 04-24

PTAT	1.43	Body Composite	0.49
Udder Composite	1.94	Dairy Composite	0.24
Feet & Legs Composite	1.30		

