



SILVERRIDGE V TIMBERLAKE  
 PROGENESIS ROBSON BARBARELLA  
 BOMAZ ROBSON  
 PROGENESIS DENVER BETSY VG-88-3YR-CAN 4\*  
 MR MOGUL DENVER 1426  
 PES009 SUPERSIRE BREANNE 3\*

**GTPI 2804**

TD TR TL XIF TY MWT TV 99%-I HH1F HH2F HH3F HH4F HH5F HH6F HCDF HMWF

Reg. #: HOCANM13353688 aAa: 435216 DMS:  
 Born: 03/26/2019 Kappa Casein: AA Beta Casein: A2A2

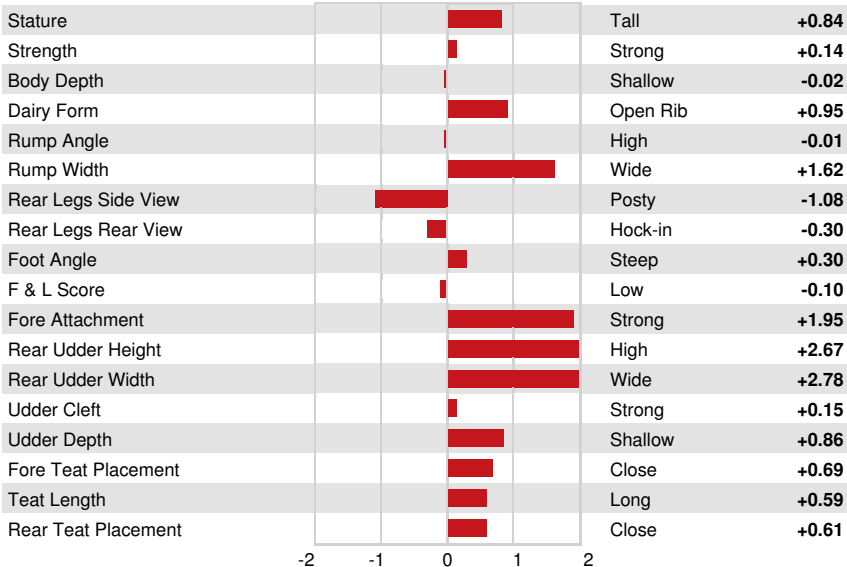
PRODUCTION		G Herds	G Dtrs	81% Rel	CDCB-G / 04-24				
Milk lbs	2076	Fat lbs	86	Fat %	+0.02	Protein lbs	74	Protein %	+0.03
NM\$	820	CM\$	829	FM\$	762	GM\$	738	DWP\$	811
Feed Efficiency	263	RFI	-19	Feed Saved	0	Methane Efficiency	89		

**HEALTH & REPRODUCTION** Immunity 102

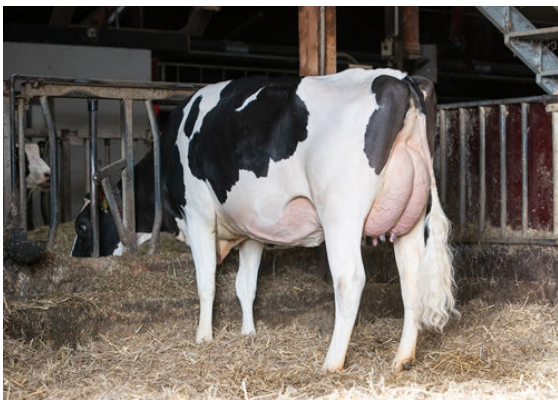
Productive Life	2.8	Calf Immunity	106
Somatic Cell Score	2.90	Cow Conception Rate	-2.1
Daughter Pregnancy Rate	-3.2	Heifer Conception Rate	1.3
Livability	-2.1	Sire Calving Ease	2.1% 86% Rel
Heifer Livability	0.0	Daughter Calving Ease	2.1% 73% Rel
Fertility Index	-2.1	Sire Stillbirth	5.2%
		Daughter Stillbirth	4.4%

**CONFORMATION** 66 Herds 163 Dtrs 87% Rel HAUSA-G / 04-24

PTAT	1.14	Body Composite	0.12
Udder Composite	1.74	Dairy Composite	0.40
Feet & Legs Composite	-0.35		



GAH PAOLA  
 DAUGHTER



GAH PAOLA  
 DAUGHTER