



PROGENESIS POSITIVE
 PROGENESIS GUARANTEE MATRIX
 WESTCOAST GUARANTEE
 PROGENESIS DUKE MELEE VG-87-5YR-USA 8*
 S-S-I MONTROSS DUKE
 PEAK BOMBERO MAXIMA VG-87-6YR-USA DOM

GTPI 2715

TD TR TL TY MWT TV 99%-I HH1F HH2F HH3F HH4F HH5F HH6F HCDF HMWF

Reg. #: HOCANM13353578 aAa: 243165 DMS: 561,135
 Born: 02/19/2019 Kappa Casein: BB Beta Casein: A1A2

PRODUCTION 186 Herds 402 Dtrs 94% Rel MACE-G / 04-24

Milk lbs 1036	Fat lbs 85	Fat % +0.16	Protein lbs 46	Protein % +0.05
NM\$ 719	CM\$ 732	FM\$ 642	GM\$ 684	DWP\$ 771
Feed Efficiency 211	RFI 76	Feed Saved -9	Methane Efficiency 109	

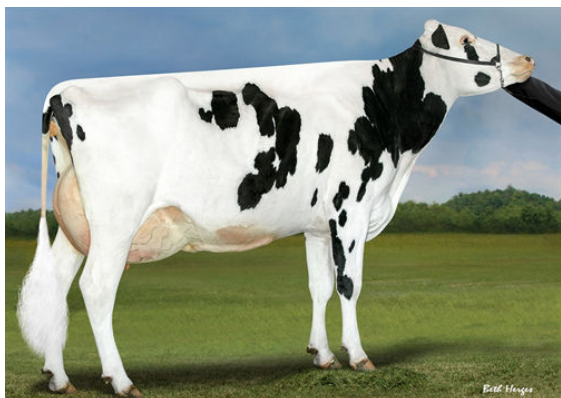
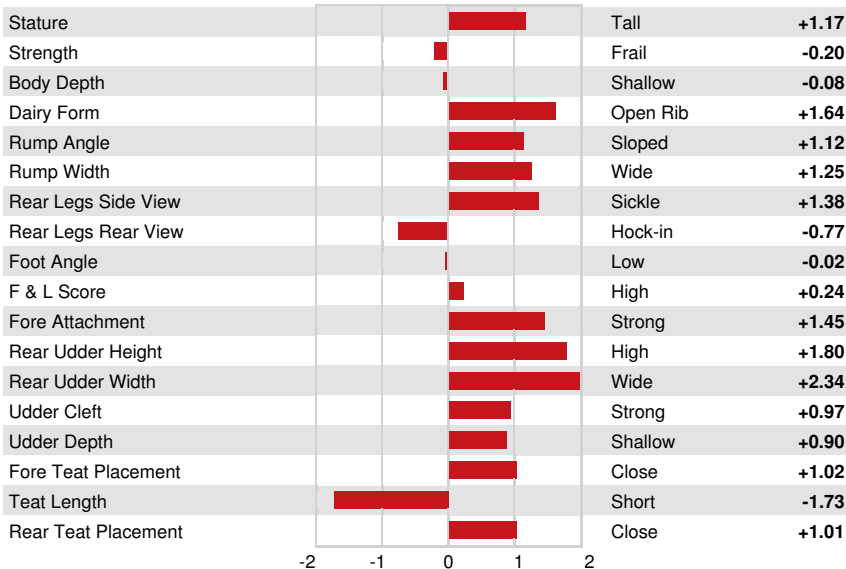
Daughter Average (ME) Milk **29,996 lbs** Fat **1,276 lbs** Protein **960 lbs**

HEALTH & REPRODUCTION Immunity **105**

Productive Life	2.7	Calf Immunity	105
Somatic Cell Score	2.77	Cow Conception Rate	-0.5
Daughter Pregnancy Rate	-1.1	Heifer Conception Rate	0.8
Livability	-0.9	Sire Calving Ease	1.8% 92% Rel
Heifer Livability	0.9	Daughter Calving Ease	1.5% 85% Rel
Fertility Index	-0.7	Sire Stillbirth	5.2%
		Daughter Stillbirth	4.7%

CONFORMATION 101 Herds 184 Dtrs 85% Rel MACE / 04-24

PTAT	1.13	Body Composite	-0.44
Udder Composite	1.27	Dairy Composite	0.51
Feet & Legs Composite	-0.30		



PROGENESIS DUKE MELEE
 GRANDDAM



PEAK BOMBERO MAXIMA
 THIRD DAM