



PROGENESIS POSITIVE  
 WESTCOAST IMAX SKY23037 5915 GP-83-2YR-CAN 2\*  
 SILVERRIDGE V IMAX  
 MS SOFIAS DELTA SKY VG-85-3YR-CAN 2\*  
 MR MOGUL DELTA 1427  
 SNOWBIZ SYMPATICO SOFIA VG-85-2YR-USA 1\*

**GTPI 2720**

TD RC TL TY MWT TV 99%-I HH1F HH2F HH3F HH4F HH5F HH6F HCDF HMWF

Reg. #: HOCANM13127779 aAa: 423561 DMS: 345,135  
 Born: 10/29/2018 Kappa Casein: AA Beta Casein: A1A2

**PRODUCTION** 27 Herds 43 Dtrs 88% Rel MACE-G / 04-24

Milk lbs <b>1397</b>	Fat lbs <b>92</b>	Fat % <b>+0.13</b>	Protein lbs <b>57</b>	Protein % <b>+0.05</b>
NM\$ <b>720</b>	CM\$ <b>729</b>	FM\$ <b>648</b>	GM\$ <b>658</b>	DWP\$ <b>634</b>
Feed Efficiency <b>246</b>	RFI <b>-115</b>	Feed Saved <b>36</b>	Methane Efficiency <b>95</b>	

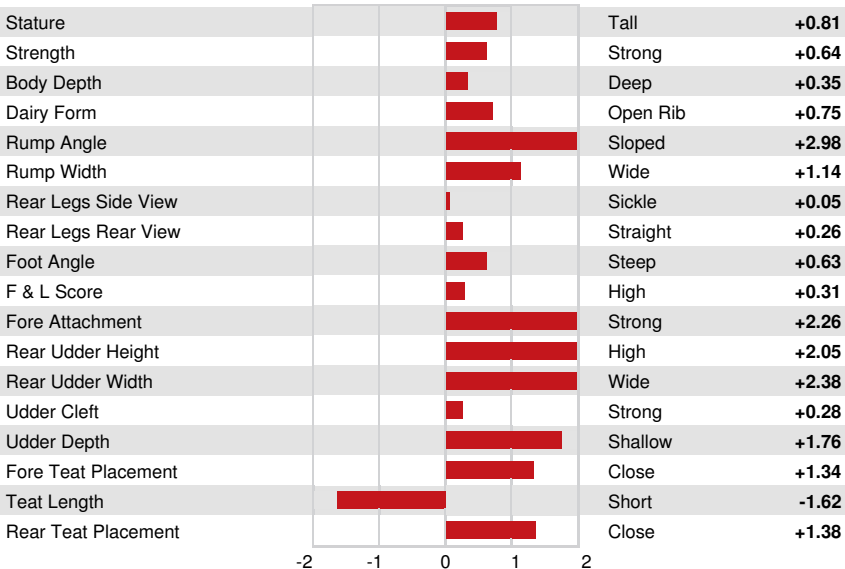
Daughter Average (ME) Milk **29,378 lbs** Fat **1,300 lbs** Protein **950 lbs**

**HEALTH & REPRODUCTION** Immunity **92**

Productive Life	<b>1.4</b>	Calf Immunity	<b>95</b>
Somatic Cell Score	<b>2.96</b>	Cow Conception Rate	<b>-2.6</b>
Daughter Pregnancy Rate	<b>-3.1</b>	Heifer Conception Rate	<b>0.5</b>
Livability	<b>-1.9</b>	Sire Calving Ease	<b>2.2%</b> 73% Rel
Heifer Livability	<b>0.2</b>	Daughter Calving Ease	<b>2.1%</b> 70% Rel
Fertility Index	<b>-2.1</b>	Sire Stillbirth	<b>4.9%</b>
		Daughter Stillbirth	<b>4.5%</b>

**CONFORMATION** G Herds G Dtrs 81% Rel MACE / 04-24

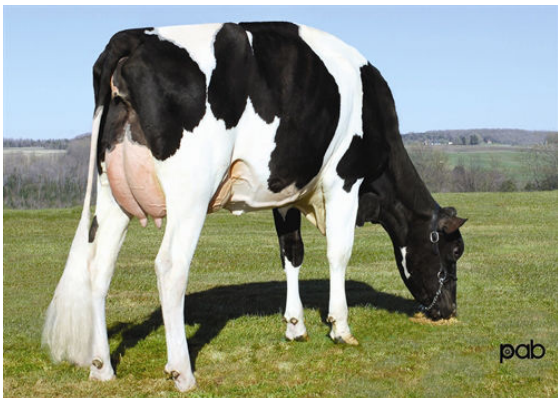
PTAT	<b>1.02</b>	Body Composite	<b>0.52</b>
Udder Composite	<b>1.74</b>	Dairy Composite	<b>0.49</b>
Feet & Legs Composite	<b>0.16</b>		



MS SOFIAS DELTA SKY  
GRANDDAM



GEN-I-BEQ SNOWMAN SUMMER  
FOURTH DAM



GEN-I-BEQ BOLTON SECRETLY  
FIFTH DAM