



PROGENESIS TOPNOTCH
 SILVERRIDGE V DUKE EMAIL VG-87-5YR-CAN 4*
 S-S-I MONTROSS DUKE
 SILVERRIDGE V SSHOT EARRING EX-90-6YR-CAN 10*
 COGENT SUPERSHOT
 SILVERRIDGE V MUNITION EARWIG EX-90-5E-CAN 5*

GTPI 3027

TD TR TL XIF TY MWT TV 99%-I HH1F HH2F HH3F HH4F HH5F HH6F HCDF HMWF

Reg. #: HOCANM12857528 aAa: 534126 DMS: 345
 Born: 04/18/2018 Kappa Casein: AB Beta Casein: A2A2

PRODUCTION 617 Herds 3216 Dtrs 99% Rel MACE-G / 04-24

Milk lbs 1205	Fat lbs 110	Fat % +0.22	Protein lbs 61	Protein % +0.08
NM\$ 939	CM\$ 961	FM\$ 812	GM\$ 893	DWP\$ 980
Feed Efficiency 246	RFI 126	Feed Saved -282	Methane Efficiency 107	

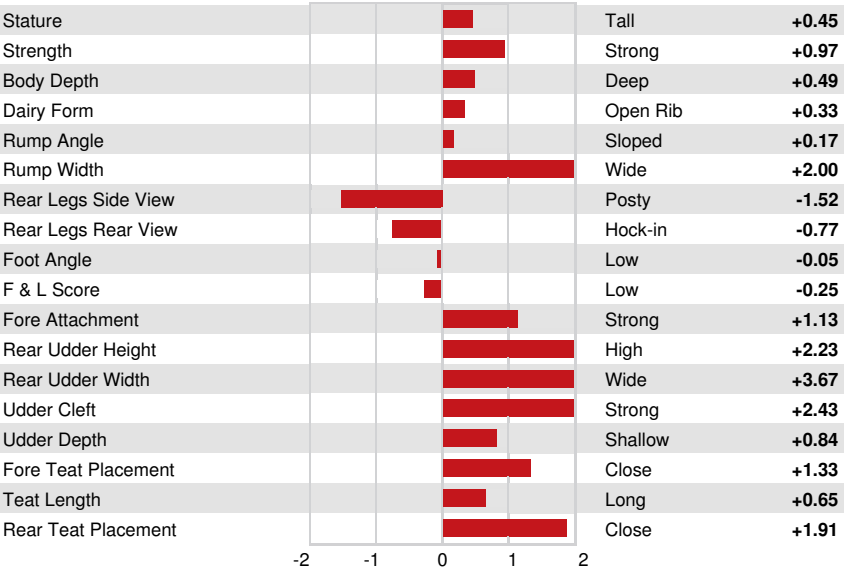
Daughter Average (ME) Milk **29,989 lbs** Fat **1,314 lbs** Protein **991 lbs**

HEALTH & REPRODUCTION Immunity **111**

Productive Life	5.0	Calf Immunity	105
Somatic Cell Score	2.64	Cow Conception Rate	1.8
Daughter Pregnancy Rate	0.1	Heifer Conception Rate	1.6
Livability	-0.1	Sire Calving Ease	2.3% 98% Rel
Heifer Livability	0.9	Daughter Calving Ease	2.1% 96% Rel
Fertility Index	0.7	Sire Stillbirth	6.5%
		Daughter Stillbirth	5.0%

CONFORMATION 393 Herds 1632 Dtrs 98% Rel MACE / 04-24

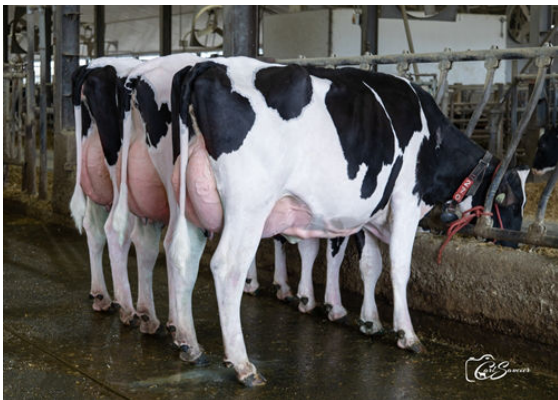
PTAT	1.28	Body Composite	1.03
Udder Composite	2.00	Dairy Composite	0.43
Feet & Legs Composite	-0.53		



PROGENESIS EINSTEIN WIMZY
 DAUGHTER



HAH ALICE
 DAUGHTER



EINSTEIN DAUGHTER GROUP

L to R - BEAUCOISE EINSTEIN ELIAS, BEAUCOISE EINSTEIN PIKKY,
 BEAUCOISE EINSTEIN PIRKI