



WESTCOAST LIGHTHOUSE  
 WALNUTLAWN ABBOTT BREE EX-90-4YR-CAN 10\*  
 WILLSBRO ABBOTT  
 WALNUTLAWN DOORMAN BREANNA VG-88-4YR-CAN 4\*  
 VAL-BISSON DOORMAN  
 SANDY-VALLEY ATWD BRADY EX-90-5YR-CAN 2\*

**GTPI 2425**

TD TR TL XIF TY MWT TV 99%-I HH1F HH2F HH3F HH4F HH5C HH6F HCDC HMWF

Reg. #: HOCANM12508193 aAa: 435126 DMS: 246  
 Born: 01/04/2018 Kappa Casein: AA Beta Casein: A2A2

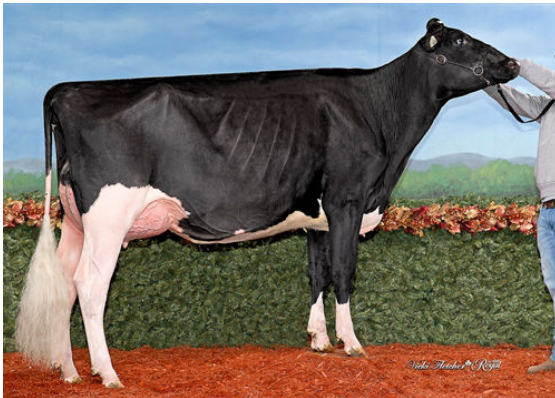
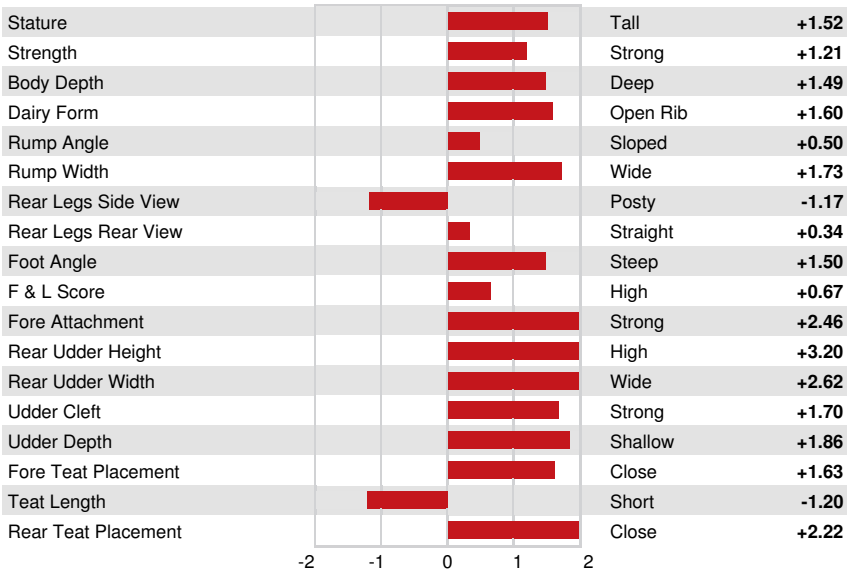
PRODUCTION		562 Herds	1236 Dtrs	92% Rel	MACE-G / 04-24				
Milk lbs	1024	Fat lbs	13	Fat %	-0.09	Protein lbs	38	Protein %	+0.02
NM\$	336	CM\$	342	FM\$	298	GM\$	314	DWP\$	197
Feed Efficiency	94	RFI	-199	Feed Saved	65	Methane Efficiency	107		

**HEALTH & REPRODUCTION** Immunity 96

Productive Life	1.4	Calf Immunity	104
Somatic Cell Score	2.89	Cow Conception Rate	-0.4
Daughter Pregnancy Rate	-0.9	Heifer Conception Rate	2.3
Livability	-1.5	Sire Calving Ease	2.6% 86% Rel
Heifer Livability	0.3	Daughter Calving Ease	2.3% 86% Rel
Fertility Index	-0.3	Sire Stillbirth	6.1%
		Daughter Stillbirth	5.3%

**CONFORMATION** 418 Herds 806 Dtrs 88% Rel MACE / 04-24

PTAT	2.01	Body Composite	0.88
Udder Composite	2.17	Dairy Composite	1.47
Feet & Legs Composite	0.32		



MOSNANG BRIDGESTONE LIVE WIRE DAUGHTER



BRIDGESTONE DAUGHTER GROUP  
 L TO R - MICHERET ARDY BRIDGESTONE, MICHERET MYSOFT BRIDGESTONE



MICHERET ARDY BRIDGESTONE DAUGHTER