



SILVERRIDGE V IMAX  
 PINE-TREE 9882 PROF 7019 VG-86-4YR-USA  
 S-S-I PARTYROCK PROFIT  
 OCD SUPERSIRE 9882 VG-86-2YR-USA DOM  
 SEAGULL-BAY SUPERSIRE  
 OCD ROBUST SHIMMER EX-90-2E-USA DOM

**GTPI 2962**

VG-CAN TD TR TL TY MWT TV 99%-I HH1F HH2F HH3F HH4F HH5F HH6F HCDF HMWF

Reg. #: HOCANM12857690 aAa: 243156 DMS: 234  
 Born: 08/03/2017 Kappa Casein: AA Beta Casein: A1A2

**PRODUCTION** 1107 Herds 7281 Dtrs 99% Rel MACE-G / 04-24

Milk lbs <b>1535</b>	Fat lbs <b>79</b>	Fat % <b>+0.07</b>	Protein lbs <b>61</b>	Protein % <b>+0.05</b>
NM\$ <b>1016</b>	CM\$ <b>1027</b>	FM\$ <b>941</b>	GM\$ <b>933</b>	DWP\$ <b>976</b>
Feed Efficiency <b>253</b>	RFI <b>-290</b>	Feed Saved <b>215</b>	Methane Efficiency <b>98</b>	

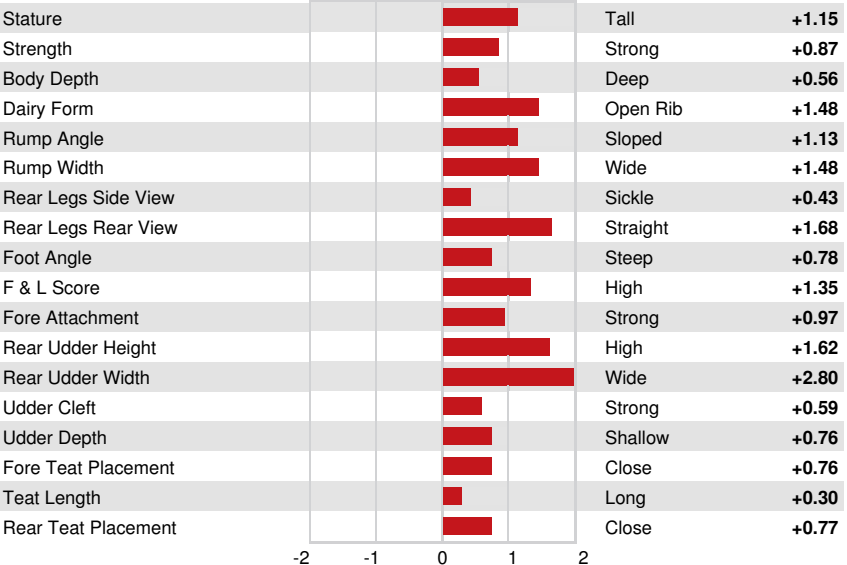
Daughter Average (ME) Milk **30,444 lbs** Fat **1,269 lbs** Protein **996 lbs**

**HEALTH & REPRODUCTION** Immunity **102**

Productive Life	<b>6.7</b>	Calf Immunity	<b>100</b>
Somatic Cell Score	<b>2.85</b>	Cow Conception Rate	<b>1.0</b>
Daughter Pregnancy Rate	<b>-0.9</b>	Heifer Conception Rate	<b>4.1</b>
Livability	<b>1.1</b>	Sire Calving Ease	<b>2.1%</b> 98% Rel
Heifer Livability	<b>0.5</b>	Daughter Calving Ease	<b>1.2%</b> 96% Rel
Fertility Index	<b>0.5</b>	Sire Stillbirth	<b>6.3%</b>
		Daughter Stillbirth	<b>3.6%</b>

**CONFORMATION** 608 Herds 2358 Dtrs 99% Rel MACE / 04-24

PTAT	<b>1.56</b>	Body Composite	<b>0.49</b>
Udder Composite	<b>1.26</b>	Dairy Composite	<b>1.00</b>
Feet & Legs Composite	<b>1.23</b>		



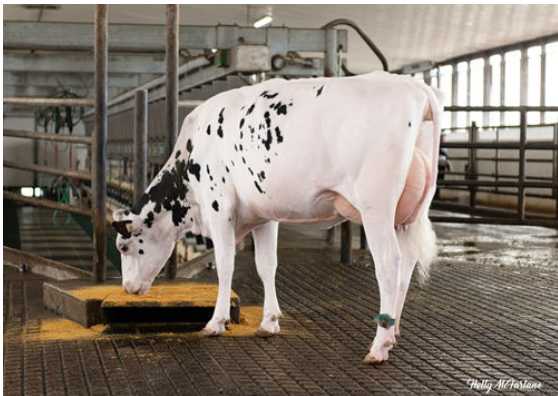
WESTCOAST PSUIT LAUMAB 8996

DAUGHTER



PROGENESIS PURSUIT DIETIES

DAUGHTER



STANTONS PURSUIT OF JUSTICE

DAUGHTER