



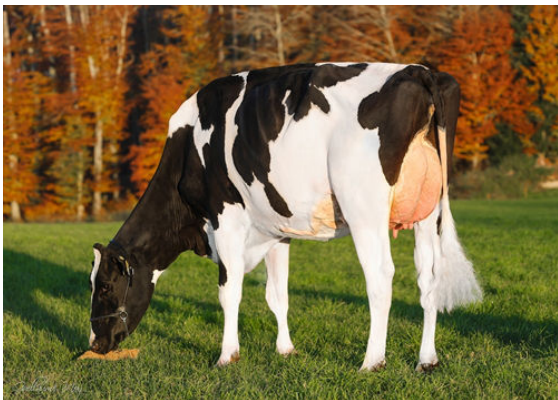
WILLSBRO ABBOTT  
 WALNUTLAWN MCCUTCHEN SUMMER EX-94-2E-CAN 11\*  
 DE-SU BKM MCCUTCHEN 1174  
 MISTY SPRINGS LAVANGUARD SUE VG-89-4YR-CAN 13\*  
 COMESTAR LAVANGUARD  
 MISTY SPRINGS FBI SUZANNE VG-87-2YR-CAN 4\*



**BIRKENTREE SIDEKICK ELLISSIA**  
 DAUGHTER



**PTIT COEUR SIDEKICK DANCING**  
 DAUGHTER



**OUR-FAVOURITE SIDEKICK PAMELA**  
 DAUGHTER

**GTPI 2170**

VG-CAN	TD	TR	TL	XIF	TY	MWT	TV	99%-1	HH1F	HH2F	HH3F	HH4F	HH5F	HH6F	HCDF	HMWF
Reg. #:	HOCANM12508113		aAa:		312546		DMS:		234,123							
Born:	07/14/2016		Kappa Casein:		AB		Beta Casein:		A2A2							

PRODUCTION	4722 Herds	15791 Dtrs	99% Rel	MACE-G / 04-24					
Milk lbs	-1223	Fat lbs	4	Fat %	+0.19	Protein lbs	-9	Protein %	+0.11
NM\$	-75	CM\$	-54	FM\$	-211	GM\$	-83	DWP\$	
Feed Efficiency	-37	RFI	5	Feed Saved	-240	Methane Efficiency	99		
Daughter Average (ME)		Milk	26,262 lbs	Fat	1,107 lbs	Protein	854 lbs		

HEALTH & REPRODUCTION	Immunity		101
Productive Life	0.1	Calf Immunity	103
Somatic Cell Score	2.76	Cow Conception Rate	0.6
Daughter Pregnancy Rate	-0.4	Heifer Conception Rate	1.2
Livability	-4.6	Sire Calving Ease	2.0% 99% Rel
Heifer Livability	0.7	Daughter Calving Ease	2.2% 96% Rel
Fertility Index	-0.3	Sire Stillbirth	6.3%
		Daughter Stillbirth	6.2%

CONFORMATION	3478 Herds	10941 Dtrs	99% Rel	MACE / 04-24	
PTAT	3.07	Body Composite	1.55		
Udder Composite	2.29	Dairy Composite	1.88		
Feet & Legs Composite	1.18				

Stature		Tall	+2.69
Strength		Strong	+1.76
Body Depth		Deep	+2.29
Dairy Form		Open Rib	+1.77
Rump Angle		High	-0.18
Rump Width		Wide	+1.84
Rear Legs Side View		Sickle	+1.88
Rear Legs Rear View		Straight	+1.37
Foot Angle		Steep	+1.70
F & L Score		High	+1.82
Fore Attachment		Strong	+3.92
Rear Udder Height		High	+3.05
Rear Udder Width		Wide	+2.03
Udder Cleft		Strong	+1.47
Udder Depth		Shallow	+3.42
Fore Teat Placement		Close	+0.71
Teat Length		Long	+0.63
Rear Teat Placement		Close	+0.05

-2 -1 0 1 2