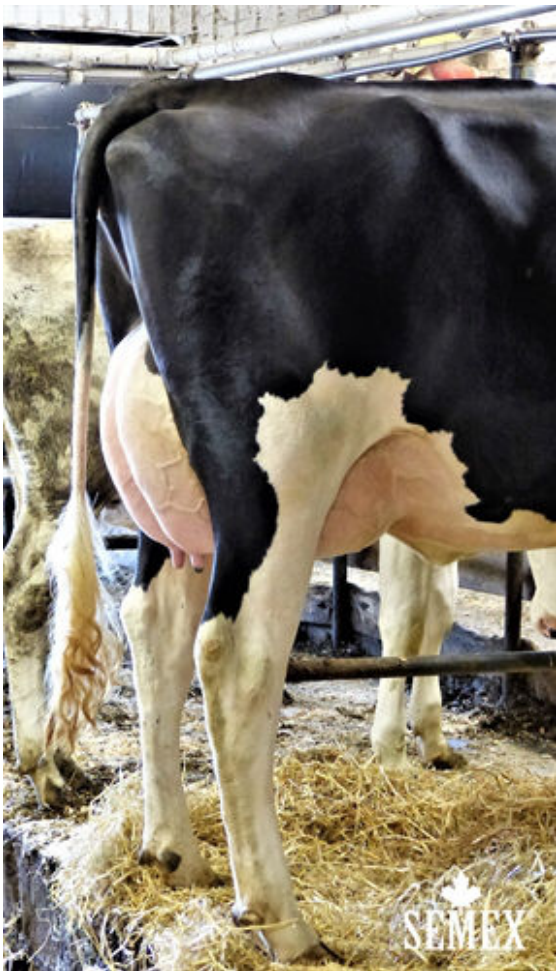




COYNE-FARMS JABIR  
 VELTHUIS SUPERSONIC ALYSSA VG-87-2YR-CAN 9\*  
 MISTY SPRINGS SUPERSONIC  
 VELTHUIS SG MOM ALESIA VG-87-2YR-CAN 23\*  
 LONG-LANGS OMAN OMAN  
 ALLYNDALE-I GOLDWYN ALBANY VG-87-2YR-CAN 14\*



GUSNIS ARMOUR MACY

**GTPI 2534**

EX-90-CAN TD TM TR TL XIF TY MWT TV HH1F HH2F HH3F HH4F HH5F HH6F HCDF  
 99%-1 HMWF

Reg. #: HOCANM108798853 aAa: 345126 DMS: 246  
 Born: 01/20/2014 Kappa Casein: BB Beta Casein: A1A2

PRODUCTION		1401 Herds	6348 Dtrs	99% Rel	MACE-G / 04-24				
Milk lbs	346	Fat lbs	49	Fat %	+0.13	Protein lbs	24	Protein %	+0.05
NM\$	524	CM\$	539	FM\$	450	GM\$	540	DWP\$	563
Feed Efficiency	104	RFI	-41	Feed Saved	-127	Methane Efficiency	95		
Daughter Average (ME)		Milk	29,607 lbs	Fat	1,180 lbs	Protein	942 lbs		

HEALTH & REPRODUCTION			Immunity	106
Productive Life	3.6	Calf Immunity	104	
Somatic Cell Score	2.66	Cow Conception Rate	2.6	
Daughter Pregnancy Rate	2.7	Heifer Conception Rate	0.2	
Livability	2.3	Sire Calving Ease	1.8%	98% Rel
Heifer Livability	1.0	Daughter Calving Ease	1.7%	95% Rel
Fertility Index	2.2	Sire Stillbirth	6.1%	
		Daughter Stillbirth	4.9%	

CONFORMATION		803 Herds	2507 Dtrs	95% Rel	MACE / 04-24	
PTAT	0.61	Body Composite	1.10			
Udder Composite	0.13	Dairy Composite	-0.13			
Feet & Legs Composite	-0.09					

