



VAL-BISSON DOORMAN
 TOC-FARM SNOW FLORA VG-86-2YR-ITA
 FLEVO GENETICS SNOWMAN
 QUALITY GOLDWYN FLANSCO EX-95-2E-CAN 9*
 BRAEDALE GOLDWYN
 QUALITY GIBSON FINSCO EX-95-3E-CAN 24*

GTPI 2189

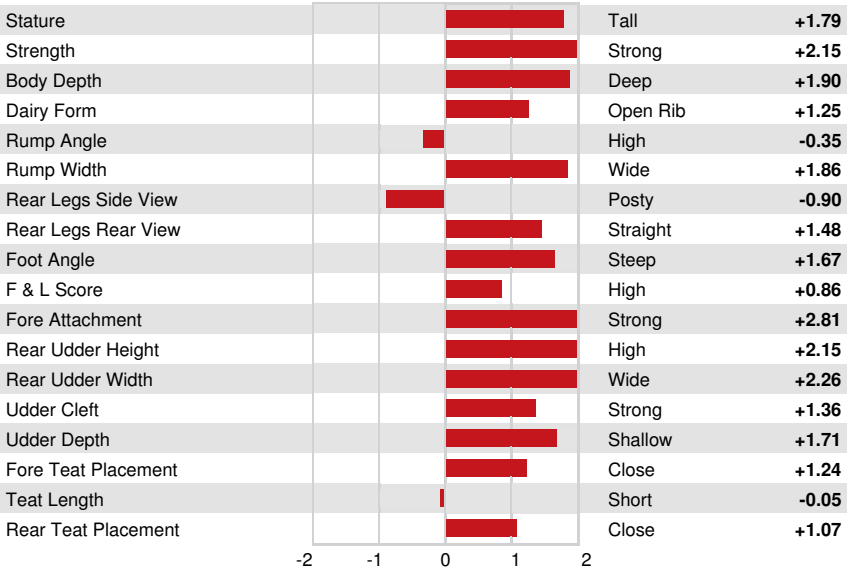
TD TR TL TY TV 99%-I HH1F HH2F HH3C HH4F HH5F HH6F HCDF HMWF

Reg. #: HOITAM53990116251 aAa: 324156 DMS:
 Born: 03/07/2014 Kappa Casein: AB Beta Casein: A1A2

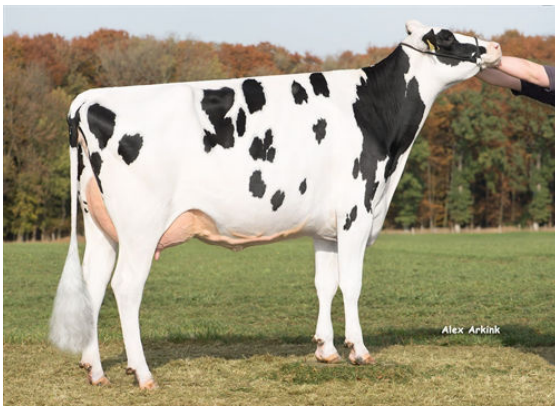
PRODUCTION		4628 Herds	16538 Dtrs	94% Rel	MACE-G / 04-24				
Milk lbs	414	Fat lbs	11	Fat %	-0.02	Protein lbs	22	Protein %	+0.03
NM\$	-12	CM\$	-1	FM\$	-66	GM\$	-85	DWP\$	-15
Feed Efficiency	13	RFI	106	Feed Saved	-385	Methane Efficiency	89		

HEALTH & REPRODUCTION			Immunity 99	
Productive Life	-0.7	Calf Immunity	101	
Somatic Cell Score	2.73	Cow Conception Rate	-3.1	
Daughter Pregnancy Rate	-2.8	Heifer Conception Rate	-1.2	
Livability	-4.4	Sire Calving Ease	2.6%	88% Rel
Heifer Livability	0.8	Daughter Calving Ease	2.6%	90% Rel
Fertility Index	-2.6	Sire Stillbirth	6.3%	
		Daughter Stillbirth	5.4%	

CONFORMATION		2779 Herds	8598 Dtrs	92% Rel	MACE / 04-24	
PTAT	2.24	Body Composite	1.84			
Udder Composite	1.81	Dairy Composite	1.62			
Feet & Legs Composite	0.69					



WILT ELAYA



FITZ DAUGHTER



FITZ DAUGHTER