



DYMENTHOLM S SYMPATICO *RC
 VAL-BISSON SHOTTLE IMELDA EX-91-6YR-CAN 11*
 PICSTON SHOTTLE
 VAL-BISSON GOLDWYN MAYA VG-88-6YR-CAN 41*
 BRAEDAILE GOLDWYN
 VAL-BISSON FINLEY DREAM VG-87-6YR-CAN 14*

GTPI 2116

GP-CAN TD RC TL TY TV HH1F HH2F HH3C HH4F HH5F HH6F HCDF HMWF

Reg. #: HOCANM108109390 aAa: 312546 DMS: 135
 Born: 05/18/2013 Kappa Casein: AB Beta Casein: A1A2

PRODUCTION 1547 Herds 3270 Dtrs 98% Rel MACE-G / 04-24

Milk lbs -966	Fat lbs 25	Fat % +0.23	Protein lbs -20	Protein % +0.04
NM\$ -126	CM\$ -113	FM\$ -178	GM\$ -136	DWP\$ -323
Feed Efficiency -40	RFI 198	Feed Saved -393	Methane Efficiency 95	

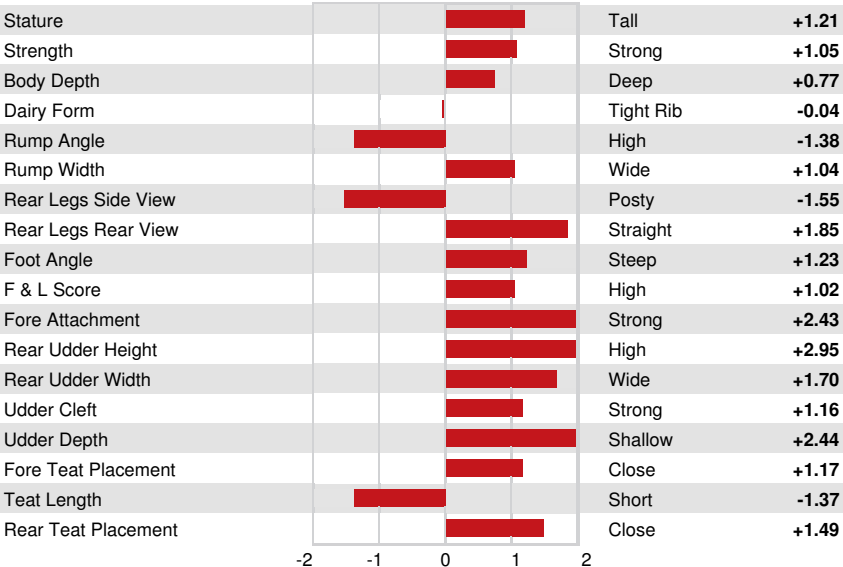
Daughter Average (ME) Milk **25,756 lbs** Fat **1,078 lbs** Protein **814 lbs**

HEALTH & REPRODUCTION Immunity **91**

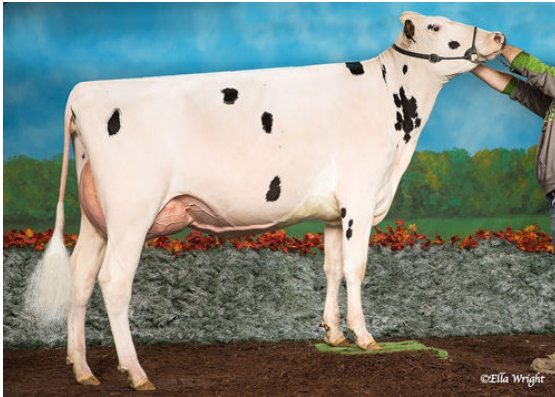
Productive Life	-1.3	Calf Immunity	100
Somatic Cell Score	2.67	Cow Conception Rate	-2.4
Daughter Pregnancy Rate	-0.4	Heifer Conception Rate	2.2
Livability	-3.2	Sire Calving Ease	2.5% 96% Rel
Heifer Livability	0.5	Daughter Calving Ease	4.0% 94% Rel
Fertility Index	0.1	Sire Stillbirth	5.6%
		Daughter Stillbirth	6.0%

CONFORMATION 1065 Herds 1994 Dtrs 98% Rel MACE / 04-24

PTAT	1.72	Body Composite	1.29
Udder Composite	2.02	Dairy Composite	0.10
Feet & Legs Composite	0.98		



GASTLOSEN INTEGRAL LAYLANI



SUNNYHOME INTEGRAL MARCIE



DESLACS INTEGRAL ANARICK