



EMERALD-ACR-SA T-BAXTER
 DE-SU OMAN 6121 VG-86-2YR-USA GMD DOM 7*
 O-BEE MANFRED JUSTICE
 DE-SU BW MARSHAL GEORGIA EX-90-2E-USA GMD DOM
 MARA-THON BW MARSHALL
 DE-SU PATRON GOLD EX-90-2E-USA GMD DOM

GTPI 1866

GP-CAN EXTRA B/R TL XIF TY TV HH1F HH2F HH3F HH4F HH5F HH6F HCDF HMWF

Reg. #: HOUSAM64700361 aAa: 435126 DMS: 345,234
 Born: 02/27/2008 Kappa Casein: AA Beta Casein: A2A2

PRODUCTION		1786 Herds	7659 Dtrs	99% Rel	MACE-G / 08-24	
Milk lbs	Fat lbs				Protein lbs	Protein %
-10	29			+0.12	-6	-0.02
NM\$ -178	CM\$ -182			FM\$ -150	GM\$ -231	DWP\$
Feed Efficiency	RFI			Feed Saved	Methane Efficiency	
-1	74			-324	86	

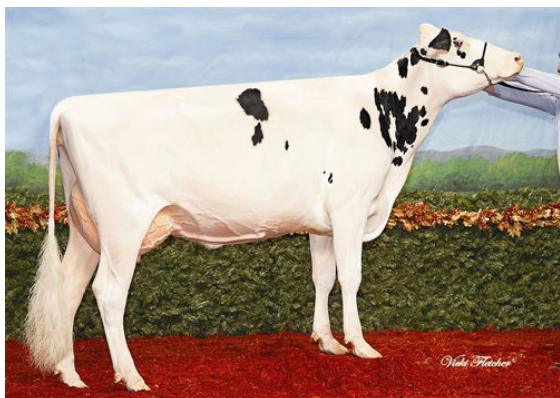
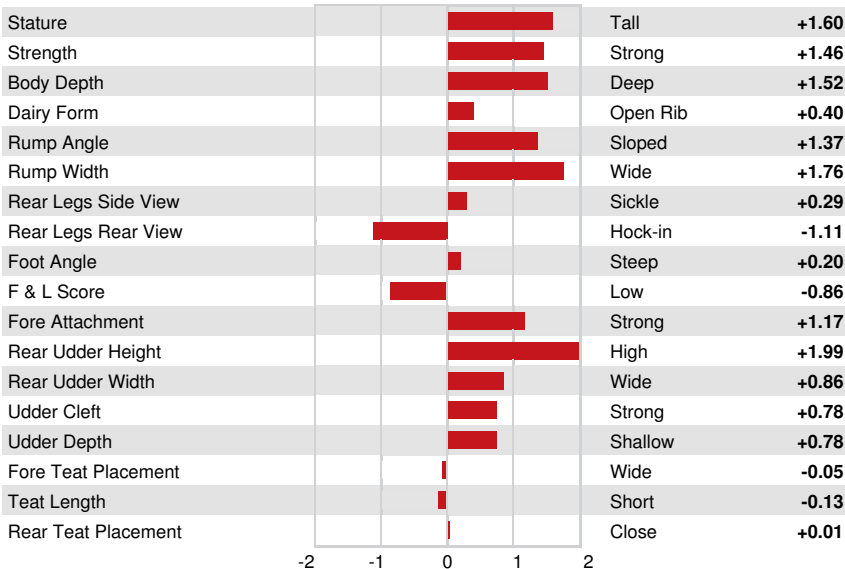
Daughter Average (ME) Milk **25,497 lbs** Fat **978 lbs** Protein **798 lbs**

HEALTH & REPRODUCTION Immunity **85**

Productive Life	-3.4	Calf Immunity	89
Somatic Cell Score	3.05	Cow Conception Rate	-4.4
Daughter Pregnancy Rate	-3.4	Heifer Conception Rate	-0.4
Livability	-1.7	Sire Calving Ease	2.8% 99% Rel
Heifer Livability	0.0	Daughter Calving Ease	2.4% 98% Rel
Fertility Index	-3.1	Sire Stillbirth	5.9%
		Daughter Stillbirth	6.0%

CONFORMATION 1390 Herds 3678 Dtrs 97% Rel MACE / 08-24

PTAT	0.47	Body Composite	1.65
Udder Composite	0.81	Dairy Composite	0.62
Feet & Legs Composite	-1.30		



LEMAVIE BOWMAN KATRINA



HILLTOP BOWMAN 9422



HILLTOP-LLC BOWMAN 4584