



MARILIE AUTOGRAPH
 MARBRAE SITTLER'S CANDY ELITE
 VISSERDALE SITTLER
 MARBRAE ARBITER'S CATALINA ELITE 1*
 RUISSEAU CLAIR ARBITER
 MARBRAE OBLIQUE'S CAMBRIDGE 2*

GPTI 499

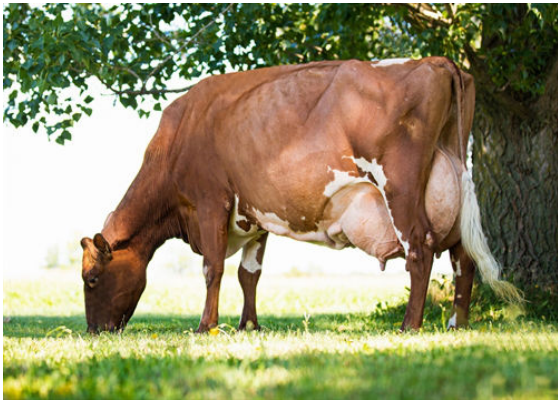
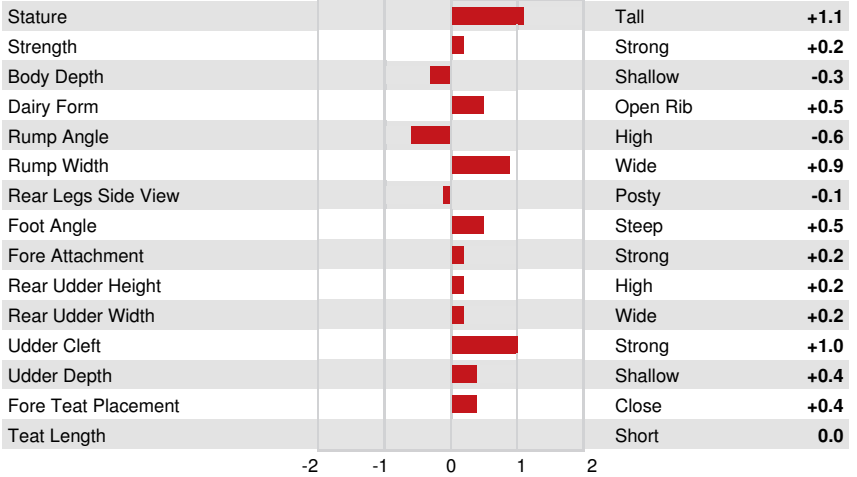
AH1F AH2F AHCF

Reg. #: AYCANN121232543 aAa: 342516 DMS:
 Born: 09/16/2022 Kappa Casein: AA Beta Casein: A2A2

PRODUCTION		G Herds	G Dtrs	41% Rel	CDCB-G / 04-24	
Milk lbs	823			Fat %	Protein lbs	Protein %
				+0.03	31	+0.02
NM\$	327			FM\$	298	GM\$
					325	

HEALTH & REPRODUCTION		Immunity	
Productive Life	0.9	Calf Immunity	
Somatic Cell Score	3.02	Cow Conception Rate	-0.3
Daughter Pregnancy Rate	-0.1	Heifer Conception Rate	0.4
Livability	-1.3		

CONFORMATION		G Herds	G Dtrs	30% Rel	ABA-G	
PTAT	0.3					



MARBRAE OBLIQUE'S CAMBRIDGE
 THIRD DAM



MARBRAE ARBITER'S CATALINA
 GRANDDAM