



DES COTEAUX RUBYWAY  
 MARBRAE ARBITER'S CATALINA EX-90-2E-CAN 1\*  
 RUISSEAU CLAIR ARBITER  
 MARBRAE OBLIQUE'S CAMBRIDGE EX-92-5E-CAN 2\*  
 JELYCA OBLIQUE  
 MARBRAE KINDLE'S CAMBER GP-82-2YR-CAN

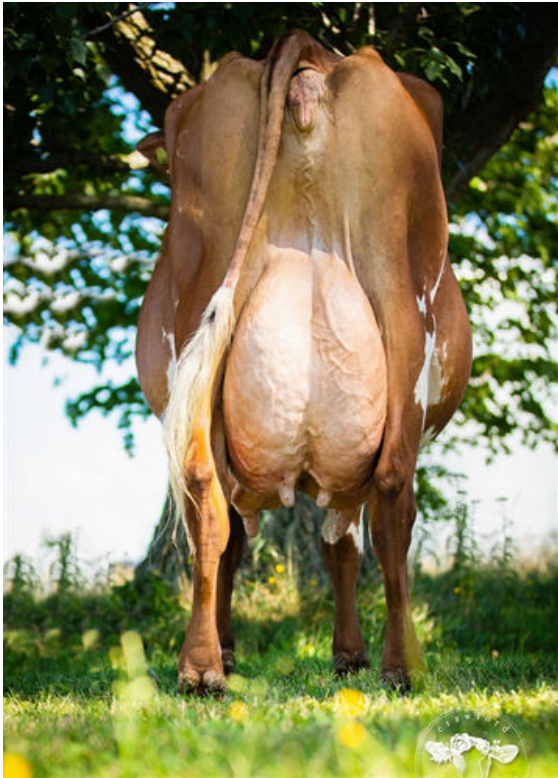
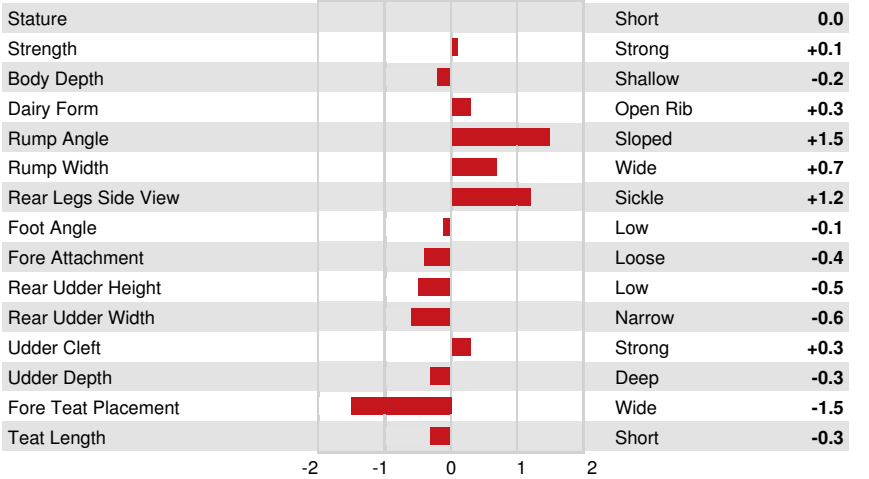
**GPTI 548**

TF	AH1F AH2F AHCF		
Reg. #: AYCANN120893455	aAa: 342516	DMS:	
Born: 10/04/2021	Kappa Casein: AA	Beta Casein: A1A2	

PRODUCTION	G Herds	G Dtrs	44% Rel	CDCB-G / 04-24	
Milk lbs <b>1629</b>	Fat lbs <b>72</b>	Fat % <b>+0.03</b>	Protein lbs <b>49</b>	Protein % <b>-0.01</b>	
NM\$ <b>564</b>	CM\$ <b>563</b>	FM\$ <b>564</b>	GM\$ <b>566</b>		

HEALTH & REPRODUCTION	Immunity 102	
Productive Life	<b>0.9</b>	Calf Immunity <b>102</b>
Somatic Cell Score	<b>3.04</b>	Cow Conception Rate <b>0.3</b>
Daughter Pregnancy Rate	<b>-0.4</b>	Heifer Conception Rate <b>1.5</b>
Livability	<b>-0.1</b>	

CONFORMATION	G Herds	G Dtrs	31% Rel	ABA-G
PTAT		<b>-0.1</b>		



MARBRAE OBLIQUE'S CAMBRIDGE  
 GRANDDAM



MARBRAE ARBITER'S CATALINA

DAM