



ORRARYD  
 KAMOURASKA POKER RUBIS VG-86-4YR-CAN 15\*  
 DES CHAMOIS POKER  
 KAMOURASKA PETERSLUND RUBY VG-87-3YR-CAN 10\*  
 PETERSLUND  
 KAMOURASKA JERRY VIRVANA EX-90-5YR-CAN 9\*

**GPTI 525**

TF AMF AH1F AH2C AHCF

Reg. #: AYCANN108719731 aAa: 561432 DMS: 345,456  
 Born: 11/29/2013 Kappa Casein: AE Beta Casein: A1A2

**PRODUCTION** 153 Herds 402 Dtrs 89% Rel MACE-G / 04-24

Milk lbs	Fat lbs	Fat %	Protein lbs	Protein %
1127	57	+0.06	52	+0.08
NM\$ 581	CM\$ 590	FM\$ 498	GM\$ 573	

Daughter Average (ME) Milk **22,525 lbs** Fat **948 lbs** Protein **756 lbs**

**HEALTH & REPRODUCTION** Immunity 98

Productive Life	0.1	Calf Immunity	97
Somatic Cell Score	3.05	Cow Conception Rate	-0.3
Daughter Pregnancy Rate	-1.7	Heifer Conception Rate	2.1
Livability	1.9		

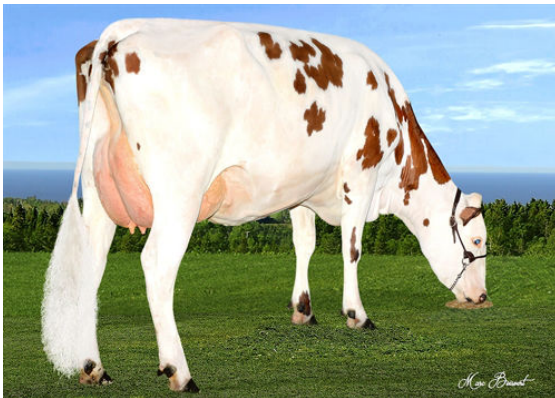
**CONFORMATION** 108 Herds 284 Dtrs 79% Rel ABA-G

PTAT -0.4

Stature	Short	-2.3
Strength	Frail	-1.1
Body Depth	Shallow	-0.8
Dairy Form	Open Rib	+0.2
Rump Angle	Sloped	+2.0
Rump Width	Narrow	-0.9
Rear Legs Side View	Posty	-0.1
Foot Angle	Steep	+0.6
Fore Attachment	Loose	-0.8
Rear Udder Height	High	+0.1
Rear Udder Width	Wide	+0.1
Udder Cleft	Weak	-0.1
Udder Depth	Deep	-0.8
Fore Teat Placement	Close	+0.3
Teat Length	Short	-3.9



GUIMOND REVOLUTION DOMINANTE



GUIMOND REVOLUTION DOMINANTE