



GENIAL SITUATION  
 KAMOURASKA JUPI UBY VG-86-3YR-CAN 7\*  
 KILDARE JUPITER  
 KAMOURASKA PETERSLUND RUBY VG-87-3YR-CAN 10\*  
 PETERSLUND  
 KAMOURASKA JERRY VIRVANA EX-90-5YR-CAN 9\*

**GPTI 477**

TF AMF	AH1C AH2F AHCF		
Reg. #: AYCANN107821541	aAa: 243156	DMS: 234	
Born: 01/03/2013	Kappa Casein: AA	Beta Casein: A2A2	

<b>PRODUCTION</b>	454 Herds	1761 Dtrs	92% Rel	MACE-G / 08-24	
Milk lbs	Fat lbs	Fat %	Protein lbs	Protein %	
768	17	-0.08	32	+0.04	
NM\$ 327	CM\$ 330	FM\$ 288	GM\$ 312		

Daughter Average (ME) Milk **19,437 lbs** Fat **808 lbs** Protein **644 lbs**

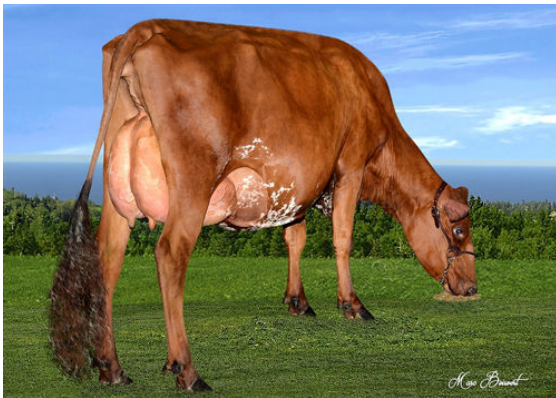
<b>HEALTH &amp; REPRODUCTION</b>	Immunity <b>95</b>	
Productive Life	1.9	Calf Immunity <b>99</b>
Somatic Cell Score	3.10	Cow Conception Rate <b>-1.5</b>
Daughter Pregnancy Rate	0.5	Heifer Conception Rate <b>-0.4</b>
Livability	0.3	

<b>CONFORMATION</b>	241 Herds	675 Dtrs	86% Rel	ABA-G
PTAT	0.1			

Stature	Short	-0.6
Strength	Frail	-0.4
Body Depth	Shallow	-0.3
Dairy Form	Open Rib	+0.1
Rump Angle	Sloped	+0.3
Rump Width	Narrow	-0.2
Rear Legs Side View	Posty	-0.1
Foot Angle	Steep	+0.7
Fore Attachment	Strong	+1.3
Rear Udder Height	High	+0.3
Rear Udder Width	Wide	+0.1
Udder Cleft	Strong	+1.1
Udder Depth	Shallow	+0.3
Fore Teat Placement	Close	+0.1
Teat Length	Short	-0.5



DES ROCHES BIGSTAR DOLCE



DES ROCHES BIGSTAR DOLCE