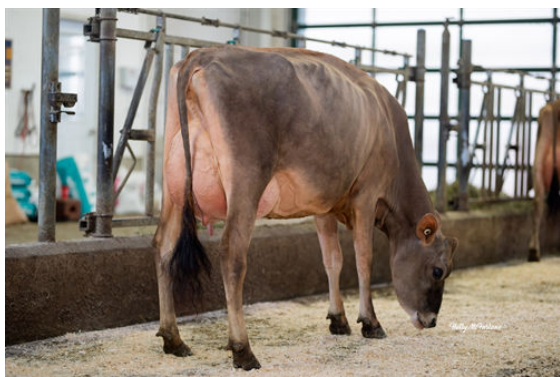




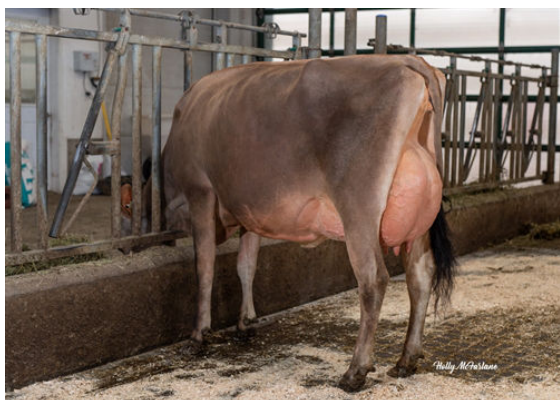
HAWARDEN IMPULS PREMIER
 ARETHUSA ON TIME VOGUE EX-94-5YR-CAN 3*
 LENCREST ON TIME
 HURONIA CENTURION VERONICA 20J EX-97%-5E-USA
 SOONER CENTURION
 GENESIS RENAISSANCE VIVIANNE VG-87-2YR-CAN 7*



PAULLOR VIRAL MAVORNA



BRIDON PNV VERONICA



BRIDON PNV GRACIE

GLPI +1472 PRO\$ 867 JH1F JNSF

Reg. #: JEAUSM705410 aAa: DMS:
 Born: 03/13/2015 Kappa Casein: AB Beta Casein: A2A2

PRODUCTION 239 Herds 642 Daughters 98% Rel GEBV 24*APR

Milk kg	Fat kg	Fat %	Protein kg	Protein %
-38	44	+0.59	14	+0.20

Daughter Average (ME) Milk **8,622 kg** Fat **462 kg** Protein **340 kg**

HEALTH & REPRODUCTION **Immunity**

Herd Life	96	Calf Immunity	
Somatic Cell Score	90	Calving Ability	96
Daughter Fertility	98	Daughter Calving Ability	96
Body Condition Score	91	Milking Speed	100
Mastitis Resistance	87	Milking Temperament	104
Lactation Persistence	102	Metabolic Disease Resistance	97

CONFORMATION 198 Herds 472 Daughters 96% Rel GEBV 24*APR

Conformation	8	Dairy Strength	12
Mammary System	2	Rump	5
Feet & Legs	11	GP or Better %	85

