



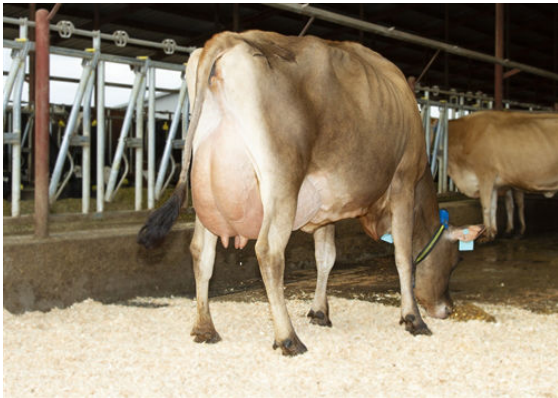
JX VIERRA HENDRIX {4}  
 PROGENESIS DOROTHY VG-84%-2YR-USA  
 VIERRA TENPENNY  
 PROGENESIS MADISON EX-90%-3YR-USA  
 JX RIVER VALLEY CHIEF {6}  
 RACHELLES VICEROY LOUISE VG-88%-6YR-USA

<b>GPA LPI +1782</b>		<b>PRO\$ 1756</b>		JH1F JNSF	
Reg. #: JE840M3239528915	aAa: 651423	DMS: 561,135			
Born: 09/13/2022	Kappa Casein: BB	Beta Casein: A1A2			
<b>PRODUCTION</b>		G Herds	G Daughters	56% Rel	GPA 24*APR
Milk kg <b>1300</b>	Fat kg <b>68</b>	Fat % <b>-0.01</b>	Protein kg <b>50</b>	Protein % <b>-0.03</b>	



PROGENESIS MADISON-  
GRANDDAM

<b>HEALTH &amp; REPRODUCTION</b>			<b>Immunity 98</b>	
Herd Life	<b>104</b>	Calf Immunity	<b>99</b>	
Somatic Cell Score	<b>106</b>	Calving Ability	<b>102</b>	
Daughter Fertility	<b>103</b>	Daughter Calving Ability	<b>103</b>	
Body Condition Score	<b>98</b>	Milking Speed	<b>97</b>	
Mastitis Resistance	<b>105</b>	Milking Temperament	<b>99</b>	
Lactation Persistence	<b>101</b>	Metabolic Disease Resistance	<b>100</b>	



RACHELLES VICEROY LOUISE  
THIRD DAM

<b>CONFORMATION</b>		G Herds	G Daughters	45% Rel	GPA 24*APR
Conformation	<b>-2</b>	Dairy Strength	<b>0</b>		
Mammary System	<b>0</b>	Rump	<b>-1</b>		
Feet & Legs	<b>-10</b>				



RACHELLES VICEROY LOUISE  
THIRD DAM

Udder Depth		Deep	<b>1D</b>
Udder Texture		Fleshy	<b>-7</b>
Median Suspensory		Strong	<b>1</b>
Fore Attachment		Strong	<b>3</b>
Fore Teat Placement		Close	<b>2C</b>
Rear Udder Height		Low	<b>0</b>
Rear Udder Width		Narrow	<b>-1</b>
Rear Teat Placement		Wide	<b>0</b>
Teat Length		Long	<b>1L</b>
Foot Angle		Low	<b>-2</b>
Heel Depth		Shallow	<b>-10</b>
Bone Quality		Coarse	<b>-4</b>
Rear Legs Side View		Sickle	<b>4C</b>
Rear Legs Rear View		Hock-in	<b>-10</b>
Stature		Tall	<b>1T</b>
Chest Width		Wide	<b>1</b>
Body Depth		Shallow	<b>0</b>
Dairy Capacity		Angular	<b>4</b>
Loin Strength		Weak	<b>-5</b>
Rump Angle		Sloped	<b>4L</b>
Pin Width		Wide	<b>2</b>