



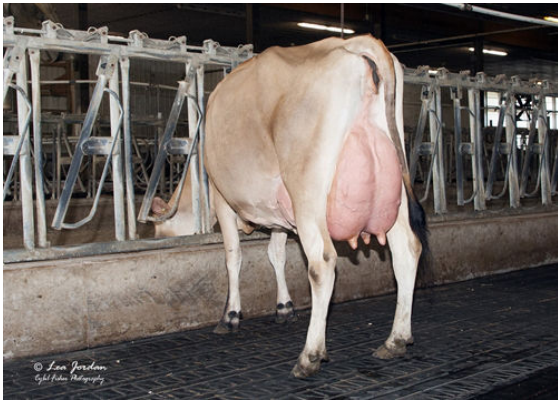
**AHLEM CAMELOT**  
 RIVER VALLEY JIGGY MAC 2344 DES-77%-3YR-USA  
 JX KASH-IN GOT JIGGY {6}  
 RIVER VALLEY LSTWL MACNCHEZ 5055 EX-91%-3YR-USA  
 HILLVIEW LISTOWEL-P  
 JER-Z-BOYZ MACNCHEZ 48947 VG-87%-3YR-USA

<b>GPA LPI +1991</b>		<b>PRO\$ 2323</b>		JH1F JNSF	
Reg. #: JE840M3239528781	aAa: 432651	DMS: 561,126			
Born: 07/09/2022	Kappa Casein: BB	Beta Casein: A2A2			
<b>PRODUCTION</b>		G Herds	G Daughters	61% Rel	GPA 24*APR
Milk kg	Fat kg	Fat %	Protein kg	Protein %	
<b>1384</b>	<b>64</b>	<b>-0.10</b>	<b>59</b>	<b>+0.04</b>	



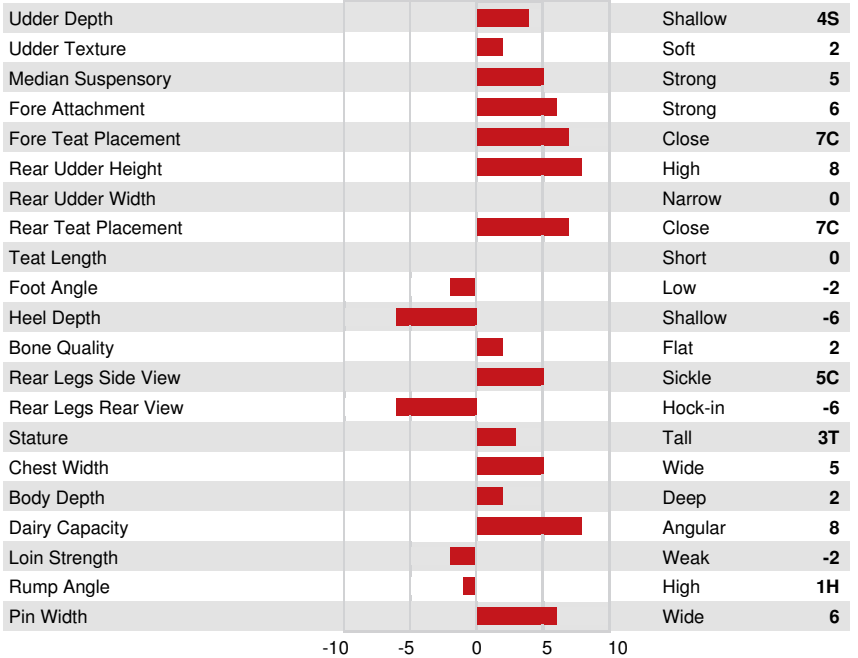
RIVER VALLEY LSTWL MACNCHEZ 5055  
GRANDDAM

<b>HEALTH &amp; REPRODUCTION</b>			<b>Immunity 100</b>	
Herd Life	<b>107</b>	Calf Immunity	<b>99</b>	
Somatic Cell Score	<b>107</b>	Calving Ability	<b>102</b>	
Daughter Fertility	<b>101</b>	Daughter Calving Ability	<b>105</b>	
Body Condition Score	<b>101</b>	Milking Speed	<b>101</b>	
Mastitis Resistance	<b>104</b>	Milking Temperament	<b>103</b>	
Lactation Persistence	<b>103</b>	Metabolic Disease Resistance	<b>100</b>	



RIVER VALLEY LSTWL MACNCHEZ 5055  
GRANDDAM

<b>CONFORMATION</b>		G Herds	G Daughters	50% Rel	GPA 24*APR
Conformation	<b>6</b>	Dairy Strength		<b>5</b>	
Mammary System	<b>7</b>	Rump		<b>3</b>	
Feet & Legs	<b>-4</b>				



JER-Z-BOYZ MACNCHEZ 48947  
THIRD DAM