



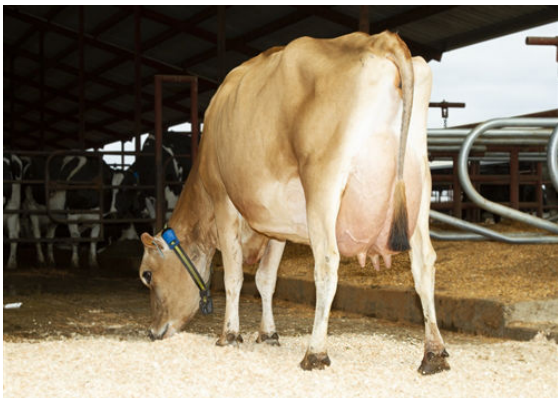
JX RIVER VALLEY CHIEF {6}  
 JX VIERRA PRESLEY {6} VG-86%-4YR-USA  
 CDF VICEROY  
 JX OAK LANE EUSEBIO ERICA {5} VG-87%-4YR-USA  
 JX FARIA BROTHERS EUSEBIO {4}  
 OAKLANE CHISEL DELLA 2130 VG-85%-5YR-USA



JX VIERRA PRESLEY {6}  
DAM



JX VIERRA PRESLEY {6}  
DAM



JX OAK LANE EUSEBIO ERICA {5}  
GRANDDAM

**GPA LPI +1869 PRO\$ 2100** JH1F JNSF

Reg. #: JE840M3218042459 aAa: 432561 DMS: 126,246  
 Born: 10/19/2020 Kappa Casein: AB Beta Casein: A2A2

PRODUCTION		G Herds G Daughters 69% Rel			GPA 24*APR				
Milk kg	1386	Fat kg	87	Fat %	+0.20	Protein kg	52	Protein %	-0.01

HEALTH & REPRODUCTION			Immunity 90		
Herd Life	97	Calf Immunity	97	Somatic Cell Score	99
Daughter Fertility	100	Calving Ability	101	Daughter Calving Ability	100
Body Condition Score	95	Milking Speed	102	Mastitis Resistance	99
Lactation Persistence	100	Milking Temperament	98	Metabolic Disease Resistance	99

CONFORMATION		G Herds G Daughters 60% Rel		GPA 24*APR	
Conformation	3	Dairy Strength	3	Mammary System	3
Feet & Legs	-1	Rump	0		

