



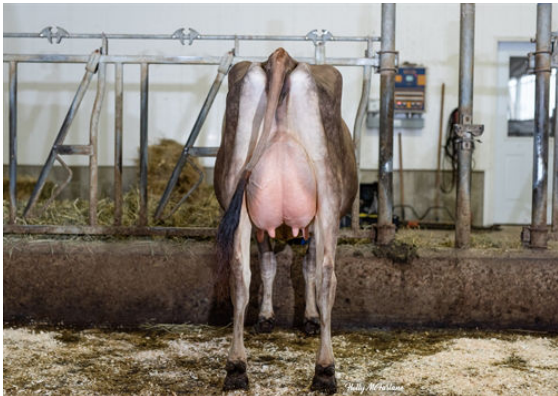
HEARTLAND IRWIN TEXAS  
 GUIMO SPECTACULAR JOELLE VG-87-2YR-CAN 6\*  
 MAACK DAIRY SPECTACULAR  
 FERMAR PARAMOUNT JOY EX-95%-8YR-USA  
 ROCK ELLA PARAMOUNT  
 EARLY RISE FIRST PRIZE JESSIE SUP-EX-92-8E-CAN 2\*



BRIDON J VISION



BRIDON J VISION



BRIDON J VISION

**GLPI +1573 PRO\$ 944** JH1C JNSF

Reg. #: JECANM109529920 aAa: 234165 DMS: 561,456  
 Born: 07/30/2015 Kappa Casein: BB Beta Casein: A2A2

**PRODUCTION** 163 Herds 306 Daughters 97% Rel GEBV 24\*APR

Milk kg	Fat kg	Fat %	Protein kg	Protein %
<b>854</b>	<b>38</b>	<b>-0.07</b>	<b>34</b>	<b>+0.01</b>

Daughter Average (ME) Milk **8,744 kg** Fat **443 kg** Protein **343 kg**

**HEALTH & REPRODUCTION** **Immunity 103**

Herd Life	<b>100</b>	Calf Immunity	<b>97</b>
Somatic Cell Score	<b>101</b>	Calving Ability	<b>105</b>
Daughter Fertility	<b>87</b>	Daughter Calving Ability	<b>94</b>
Body Condition Score	<b>97</b>	Milking Speed	<b>99</b>
Mastitis Resistance	<b>98</b>	Milking Temperament	<b>96</b>
Lactation Persistence	<b>107</b>	Metabolic Disease Resistance	<b>102</b>

**CONFORMATION** 140 Herds 288 Daughters 94% Rel GEBV 24\*APR

Conformation	<b>6</b>	Dairy Strength	<b>-3</b>
Mammary System	<b>7</b>	Rump	<b>-4</b>
Feet & Legs	<b>8</b>	GP or Better %	<b>81</b>

