



WESTCOAST ALCOVE  
 MYSTIQUE LAMBDA ANIS VG-89-4YR-CAN 1\*  
 FARNEAR DELTA-LAMBDA  
 MYSTIQUE EXTREME ABRICOT EX-94-4E-CAN 6\*  
 SILVERRIDGE V EXTREME  
 MYSTIQUE MCCUTCHEN APRIL EX-93-2E-USA 3\*

**GPA LPI +3673 PRO\$ 1826**

DPF RDF BLF CNF BYF MWF CVF HH1F HH2F HH3F HH4F HH5F HH6F HCDF HMWF

Reg. #: HOCANM14259316 aAa: 324156 DMS: 234,246  
 Born: 06/13/2022 Kappa Casein: AA Beta Casein: A2A2

PRODUCTION			G Herds	G Daughters	85% Rel	GPA 24* APR	
Milk kg	Fat kg	Fat %				Protein kg	Protein %
1066	72	+0.25				44	+0.05
Feed Efficiency	BMR	Methane Efficiency					
101	92	102					

HEALTH & REPRODUCTION			Immunity 98	
Herd Life	105	Calf Immunity	100	
Somatic Cell Score	98	Calving Ability	101	
Daughter Fertility	101	Daughter Calving Ability	97	
Body Condition Score	104	Milking Speed	97	
Mastitis Resistance	99	Milking Temperament	100	
Lactation Persistence	100	Metabolic Disease Resistance	98	

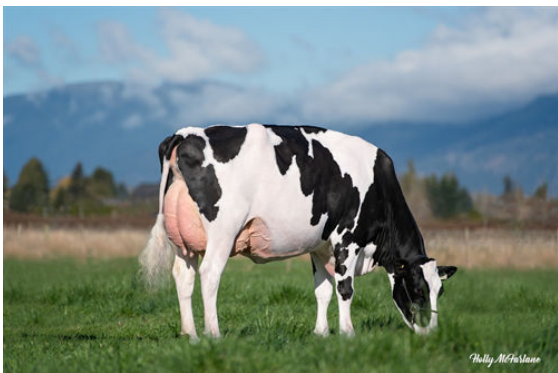
CONFORMATION			G Herds	G Daughters	82% Rel	GPA 24* APR	
Conformation	16	Dairy Strength				13	
Mammary System	12	Rump				8	
Feet & Legs	11						



MYSTIQUE EXTREME ABRICOT  
 GRANDDAM



MYSTIQUE LAMBDA ANIS  
 DAM



MYSTIQUE LAMBDA ANIS  
 DAM