



HILMAR BOSA
 PEAK DETROIT STAPLETON
 PROGENESIS DETROIT
 MS 9882 ACHIEVER SUCCESS
 ABS ACHIEVER
 OCD SUPERSIRE 9882 VG-86-2YR-USA DOM

GPA LPI +3545 PRO\$ 2636

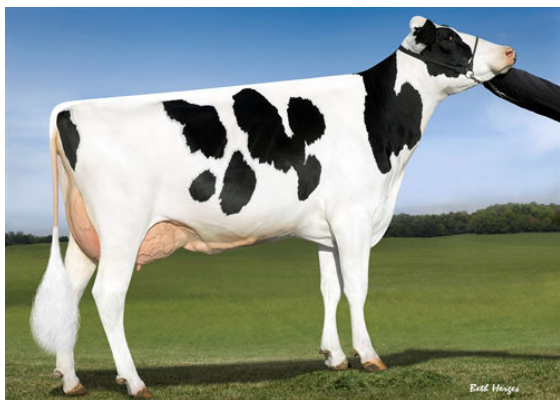
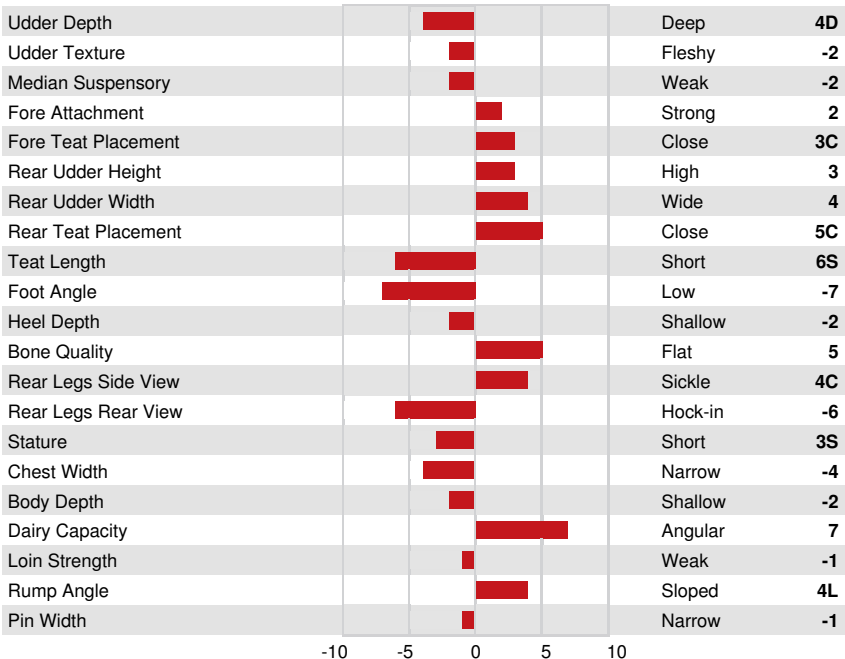
DPF RDF BLF CNF XIF BYF MWF CVF HH1F HH2F HH3F HH4F HH5C HH6F HCDF HMWF

Reg. #: HOCANM14074717 aAa: 423516 DMS: 135,123
 Born: 05/03/2021 Kappa Casein: AB Beta Casein: A2A2

PRODUCTION			GPA 24* APR	
G Herds		G Daughters		81% Rel
Milk kg	Fat kg	Fat %	Protein kg	Protein %
1314	132	+0.71	71	+0.23
Feed Efficiency	BMR	Methane Efficiency		
102	107	93		

HEALTH & REPRODUCTION		Immunity
Herd Life	106	Calf Immunity 103
Somatic Cell Score	103	Calving Ability 103
Daughter Fertility	99	Daughter Calving Ability 107
Body Condition Score	95	Milking Speed 99
Mastitis Resistance	102	Milking Temperament 102
Lactation Persistency	98	Metabolic Disease Resistance 99

CONFORMATION		GPA 24* APR	
G Herds		G Daughters	
Conformation	0	Dairy Strength	1
Mammary System	-1	Rump	1
Feet & Legs	0		



OCD SUPERSIRE 9882
 THIRD DAM



AMMON-PEACHEY SHANA
 FIFTH DAM



AMMON-PEACHEY SHANA
 FIFTH DAM