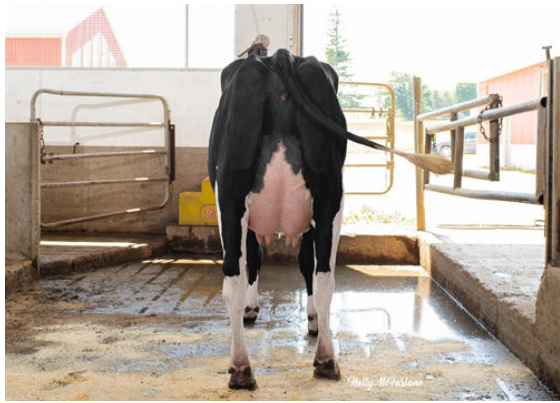




SIEMERS BRAVE  
 PROGENESIS POSITIVE TRILLIUM VG-85-3YR-CAN  
 PROGENESIS POSITIVE  
 PROGENESIS CHARLEY TULIP VG-88-4YR-CAN 2\*  
 DG CHARLEY  
 IHG LOTTOMAX TANIA VG-85-3YR-USA 3\*



PROGENESIS POSITIVE TRILLIUM  
 DAM



PROGENESIS CHARLEY TULIP  
 GRANDDAM



IHG LOTTOMAX TANIA  
 THIRD DAM

**GPA LPI +3307 PRO\$ 2086**  
 DPF RDF BLF CNF BYF MWF CVF HH1F HH2F HH3F HH4F HH5F HH6F HCDF HMWF

Reg. #: HOCANM13777626 aAa: DMS: 345,135  
 Born: 03/06/2021 Kappa Casein: AA Beta Casein: A2A2

PRODUCTION			G Herds	G Daughters	83% Rel	GPA 24* AUG	
Milk kg	Fat kg	Fat %				Protein kg	Protein %
1059	75	+0.28				64	+0.22
Feed Efficiency	BMR	Methane Efficiency					
96	101	94					

HEALTH & REPRODUCTION			Immunity 96	
Herd Life	105	Calf Immunity	101	
Somatic Cell Score	102	Calving Ability	106	
Daughter Fertility	101	Daughter Calving Ability	108	
Body Condition Score	98	Milking Speed	98	
Mastitis Resistance	98	Milking Temperament	103	
Lactation Persistency	101	Metabolic Disease Resistance	101	

CONFORMATION			G Herds	G Daughters	79% Rel	GPA 24* AUG	
Conformation	2	Dairy Strength				-2	
Mammary System	4	Rump				-3	
Feet & Legs	3						

