



CLAYNOOK ZASBERILLA
 PROGENESIS HOT VACATION VG-86-4YR-CAN
 PEAK HOTJOB
 FB LULU ACHV VEGAS EX-90-6YR-CAN 1*
 ABS ACHIEVER
 STUNNING-M MONTROSS LULU VG-87-2YR-USA DOM

GPA LPI +3470 PRO\$ 2604

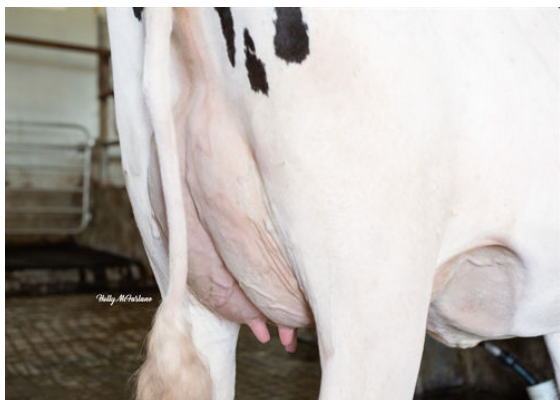
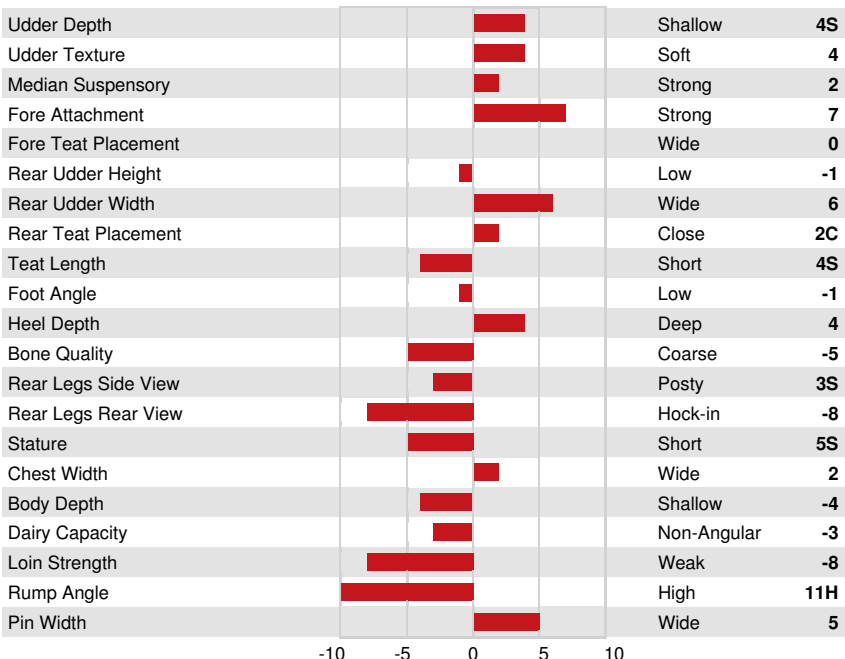
DPF RDF BLF CNF BYF MWF CVF HH1F HH2F HH3F HH4F HH5F HH6F HCDF HMWF

Reg. #: HOCANM13807972 aAa: 243651 DMS: 561,456
 Born: 10/15/2020 Kappa Casein: AB Beta Casein: A2A2

PRODUCTION			GPA 24* APR	
Milk kg	Fat kg	Fat %	Protein kg	Protein %
716	114	+0.73	67	+0.34
Feed Efficiency	BMR	Methane Efficiency		
101	98	99		

HEALTH & REPRODUCTION		Immunity 108
Herd Life	105	Calf Immunity 102
Somatic Cell Score	105	Calving Ability 105
Daughter Fertility	99	Daughter Calving Ability 105
Body Condition Score	104	Milking Speed 105
Mastitis Resistance	104	Milking Temperament 99
Lactation Persistence	101	Metabolic Disease Resistance 106

CONFORMATION		GPA 24* APR	
	80% Rel		
Conformation	0	Dairy Strength	-2
Mammary System	7	Rump	-9
Feet & Legs	-6		



FB LULU ACHV VEGAS
GRANDDAM



FB LULU ACHV VEGAS
GRANDDAM