



PEAK ZAZZLE

WINSTAR CRIMSON GEM VG-86-3YR-USA

ABS CRIMSON

SEAGULL-BAY JEDI MIRAGE VG-88-5YR-USA

S-S-I MONTROSS JEDI

IHG NOMINEE MER 9040 VG-85-4YR-USA

GPA LPI +3511 PRO\$ 2670

VG-CAN DPF RDF BLF CNF BYF MWF CVF HH1F HH2F HH3F HH4F HH5F HH6C HCDF HMWF

Reg. #: HO840M3212150599

aAa: 432561

DMS: 345,135

Born: 06/02/2020

Kappa Casein: BB

Beta Casein: A1A2

PRODUCTION 11 Herds 35 Daughters 84% Rel GMACE 24*APR

Milk kg	Fat kg	Fat %	Protein kg	Protein %
97	120	+1.03	55	+0.44
Feed Efficiency	BMR	Methane Efficiency		
99	105	101		

HEALTH & REPRODUCTION

Immunity 102

Herd Life	107	Calf Immunity	99
Somatic Cell Score	106	Calving Ability	107
Daughter Fertility	106	Daughter Calving Ability	108
Body Condition Score	99	Milking Speed	102
Mastitis Resistance	105	Milking Temperament	105
Lactation Persistence	104	Metabolic Disease Resistance	101

CONFORMATION

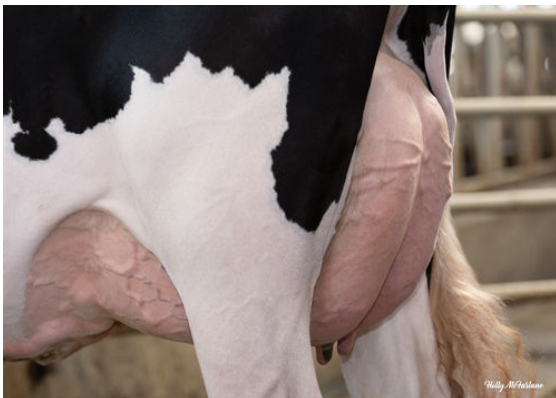
G Herds G Daughters 80% Rel

GPA 24*APR

Conformation	-1	Dairy Strength	-4
Mammary System	0	Rump	-1
Feet & Legs	0		



PROGENESIS WC 13179 DAUGHTER



PROGENESIS WC 13179 DAUGHTER