



STANTONS ELDORADO  
 PROGENESIS MILKTIME MIRAGE  
 STE ODILE MILKTIME  
 PROGENESIS MODESTY MISSILE GP-81-2YR-USA 2\*  
 BACON-HILL PETY MODESTY  
 OCD DELTA MISSY EX-93-5YR-CAN 6\*

**GMACE LPI +3511 PRO\$ 2346**

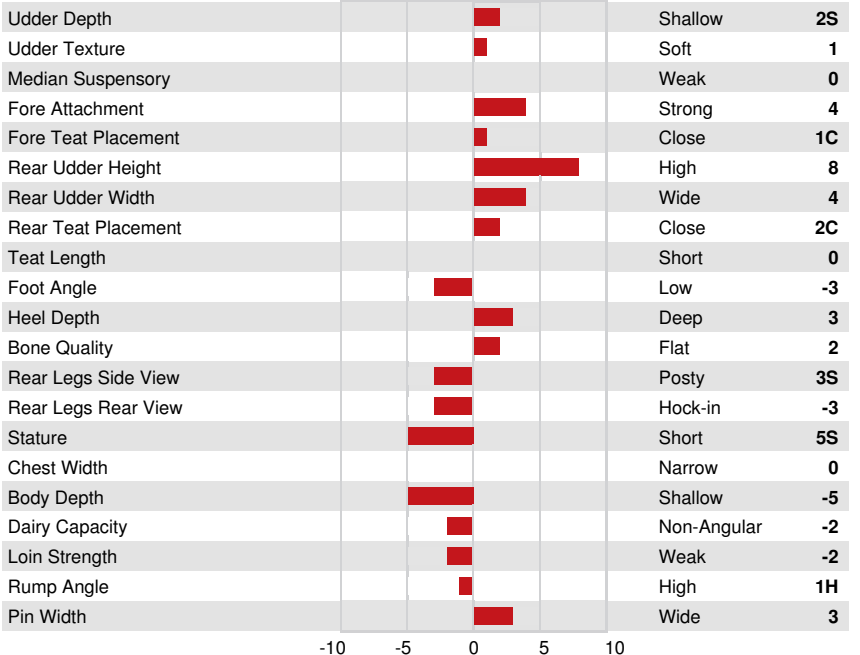
VG DPF MFF RDF BLF BYF MWF CVF HH1F HH2F HH3F HH4F HH5F HH6F HCDF HMWF

Reg. #: HOCANM13442781 aAa: 432561 DMS: 135,123  
 Born: 12/15/2019 Kappa Casein: BB Beta Casein: A2A2

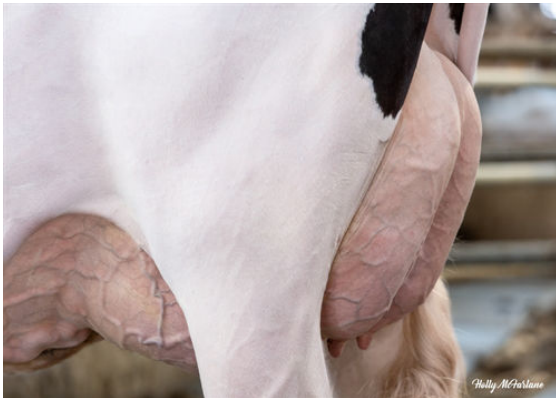
PRODUCTION			GMACE 24* AUG	
18 Herds 62 Daughters 82% Rel				
Milk kg	Fat kg	Fat %	Protein kg	Protein %
849	63	+0.26	57	+0.25
Feed Efficiency	BMR	Methane Efficiency		
105	99	100		

HEALTH & REPRODUCTION		Immunity	106
Herd Life	106	Calf Immunity	102
Somatic Cell Score	108	Calving Ability	111
Daughter Fertility	105	Daughter Calving Ability	106
Body Condition Score	102	Milking Speed	93
Mastitis Resistance	107	Milking Temperament	99
Lactation Persistence	101	Metabolic Disease Resistance	106

CONFORMATION		GMACE 24* AUG	
10 Herds 37 Daughters 79% Rel			
Conformation	4	Dairy Strength	-2
Mammary System	7	Rump	0
Feet & Legs	0		



WESTCOAST MAHOMES SKY 12669  
 DAUGHTER



WESTCOAST MAHOMES SKY 12669  
 DAUGHTER