



PEAK HOTJOB
 PROGENESIS GTEE CABERNET RED VG-87-4YR-CAN
 WESTCOAST GUARANTEE
 HOLLENDALE JEDI CRIM-RED VG-88-5YR-USA 2*
 S-S-I MONTROSS JEDI
 RI-VAL-RE TG CRIMSON-RED VG-86-2YR-USA

GMACE LPI +3425 PRO\$ 2236

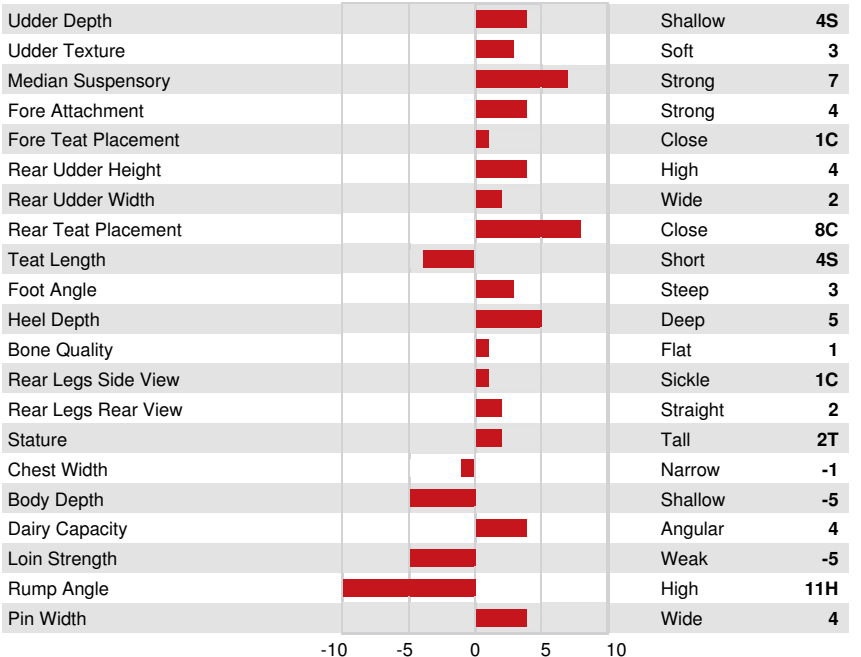
DPF BKC RDF BLF CNF BYF MWF CVF HH1F HH2F HH3F HH4F HH5F HH6F HCDF HMWF

Reg. #: HOCANM13567622 aAa: 432561 DMS: 561,135
 Born: 11/15/2019 Kappa Casein: AB Beta Casein: A2A2

PRODUCTION			GMACE 24*APR	
23 Herds 66 Daughters 84% Rel				
Milk kg	Fat kg	Fat %	Protein kg	Protein %
1314	93	+0.36	69	+0.21
Feed Efficiency	BMR	Methane Efficiency		
100	96	101		

HEALTH & REPRODUCTION		Immunity
Herd Life	104	Calf Immunity 96
Somatic Cell Score	100	Calving Ability 102
Daughter Fertility	102	Daughter Calving Ability 108
Body Condition Score	98	Milking Speed 99
Mastitis Resistance	105	Milking Temperament 98
Lactation Persistence	90	Metabolic Disease Resistance 106

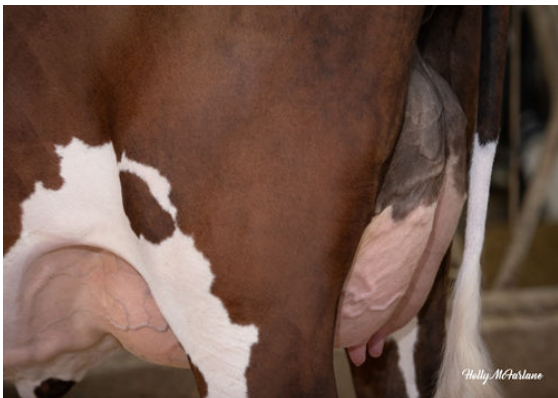
CONFORMATION		GMACE 24*APR	
10 Herds 22 Daughters 80% Rel			
Conformation	1	Dairy Strength	1
Mammary System	4	Rump	-8
Feet & Legs	-2		



PROGENESIS CHAMPION TIANNA
 DAUGHTER



PROGENESIS CHAMPION TIANNA
 DAUGHTER



PROGENESIS CHAMPION TIANNA
 DAUGHTER