



BOMAZ SOHOT
 FB LULU ACHV VEGAS EX-90-6YR-CAN 1*
 ABS ACHIEVER
 STUNNING-M MONTROSS LULU VG-87-2YR-USA DOM
 BACON-HILL MONTROSS
 BUTLERVIEW UNO LIVA 2074 VG-85-3YR-USA

GPA LPI +3217 PRO\$ 1718

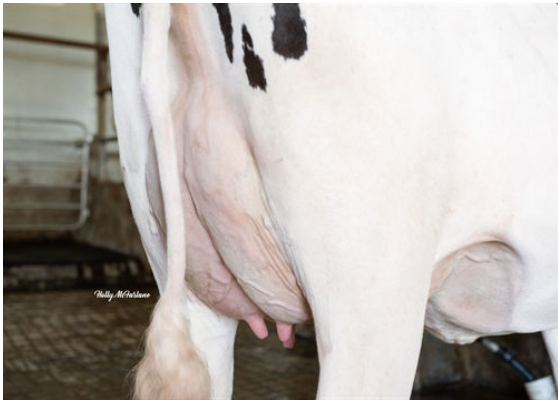
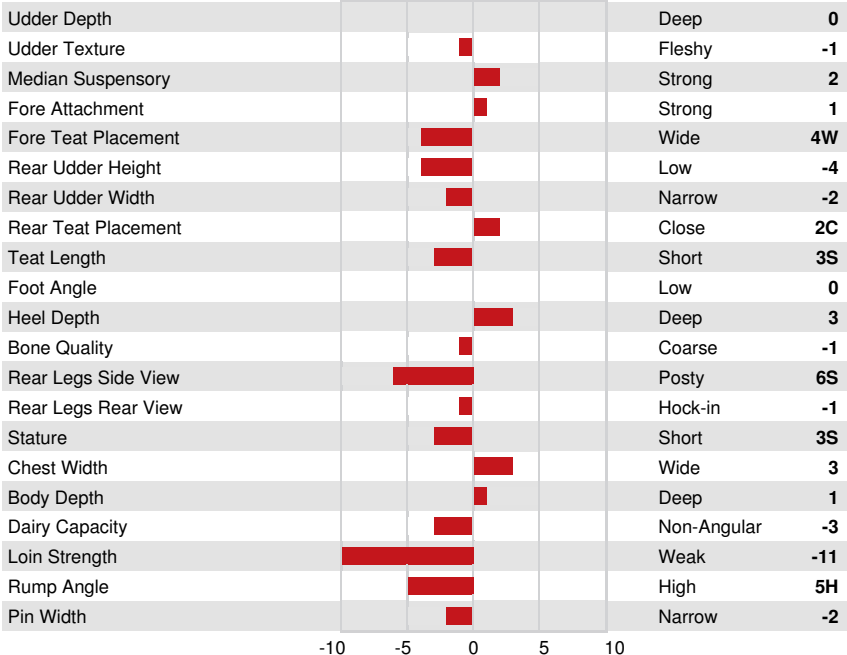
DPF RDF BLF CNF BYF MWF CVF HH1F HH2F HH3F HH4F HH5C HH6F HCDF HMWF

Reg. #: HOCANM13483482 aAa: 423516 DMS: 345,135
 Born: 09/30/2019 Kappa Casein: AB Beta Casein: A2A2

PRODUCTION			GMACE 24* AUG	
27 Herds 333 Daughters 91% Rel				
Milk kg	Fat kg	Fat %	Protein kg	Protein %
-501	88	+0.99	25	+0.38
Feed Efficiency	BMR	Methane Efficiency		
93	99	100		

HEALTH & REPRODUCTION		Immunity
Herd Life	105	Calf Immunity 111
Somatic Cell Score	108	Calving Ability 110
Daughter Fertility	105	Daughter Calving Ability 109
Body Condition Score	102	Milking Speed 98
Mastitis Resistance	109	Milking Temperament 98
Lactation Persistence	97	Metabolic Disease Resistance 105

CONFORMATION		GPA 24* AUG	
G Herds	G Daughters	80% Rel	
Conformation	-2	Dairy Strength	-2
Mammary System	-1	Rump	-7
Feet & Legs	2		



FB LULU ACHV VEGAS
DAM



FB LULU ACHV VEGAS
DAM