



SILVERRIDGE V TIMBERLAKE  
 PROGENESIS ROBSON BARBARELLA  
 BOMAZ ROBSON  
 PROGENESIS DENVER BETSY VG-88-3YR-CAN 4\*  
 MR MOGUL DENVER 1426  
 PES009 SUPERSIRE BREANNE 3\*

**GPA LPI +3249 PRO\$ 2013**

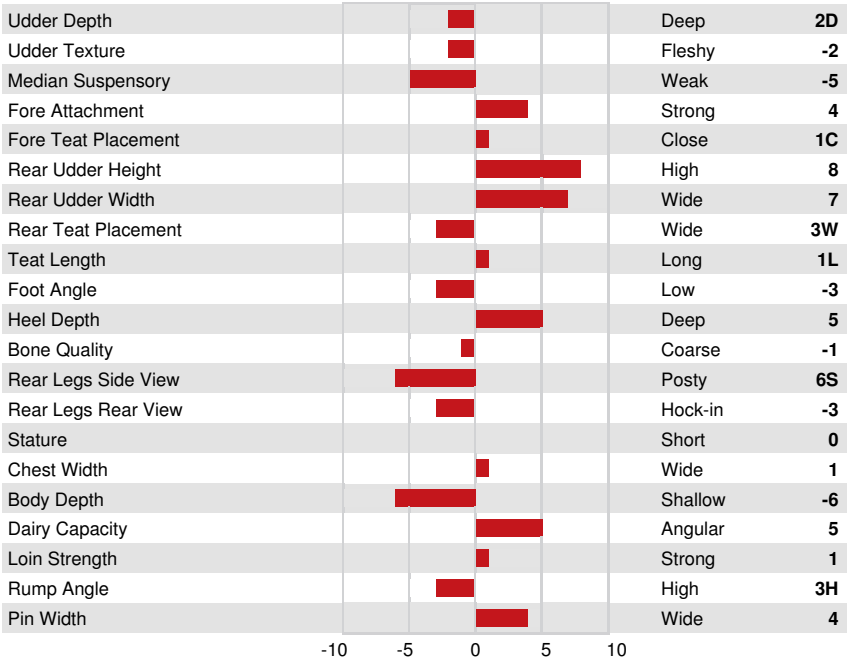
DPF RDF BLF CNF XIF BYF MWF CVF HH1F HH2F HH3F HH4F HH5F HH6F HCDF HMWF

Reg. #: HOCANM13353688 aAa: 435216 DMS:  
 Born: 03/26/2019 Kappa Casein: AA Beta Casein: A2A2

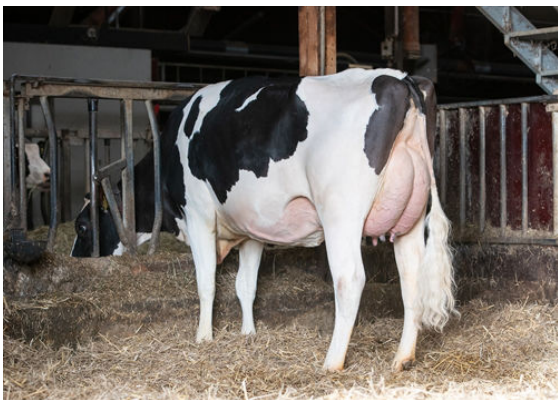
PRODUCTION			GPA 24* APR	
Milk kg	Fat kg	Fat %	Protein kg	Protein %
1853	82	+0.08	83	+0.15
Feed Efficiency	BMR	Methane Efficiency		
99	98	89		

HEALTH & REPRODUCTION		Immunity 102
Herd Life	101	Calf Immunity 106
Somatic Cell Score	103	Calving Ability 103
Daughter Fertility	93	Daughter Calving Ability 105
Body Condition Score	97	Milking Speed 96
Mastitis Resistance	104	Milking Temperament 103
Lactation Persistence	95	Metabolic Disease Resistance 100

CONFORMATION		GEBV 24* APR	
	18 Herds	28 Daughters	88% Rel
Conformation	2	Dairy Strength	2
Mammary System	4	Rump	0
Feet & Legs	-3		



GAH PAOLA  
 DAUGHTER



GAH PAOLA  
 DAUGHTER