



PROGENESIS POSITIVE

PINE-TREE 9882 GATE 7345 VG-87-3YR-USA

TRIPLECROWN GATEDANCER

OCD SUPERSIRE 9882 VG-86-2YR-USA DOM

SEAGULL-BAY SUPERSIRE

OCD ROBUST SHIMMER EX-90-2E-USA DOM

GMACE LPI +3372 PRO\$ 2044

DPF RDF BLF CNF BYF MWF CVF HH1F HH2F HH3F HH4F HH5F HH6F HCDF HMWF

Reg. #: HO840M3199701886

aAa: 234165

DMS: 234,345

Born: 12/04/2018

Kappa Casein: BB

Beta Casein: A2A2

PRODUCTION 49 Herds 1121 Daughters 93% Rel GMACE 24*APR

Milk kg	Fat kg	Fat %	Protein kg	Protein %
492	105	+0.75	61	+0.39
Feed Efficiency	BMR	Methane Efficiency		
95	101	105		

HEALTH & REPRODUCTION

Immunity 96

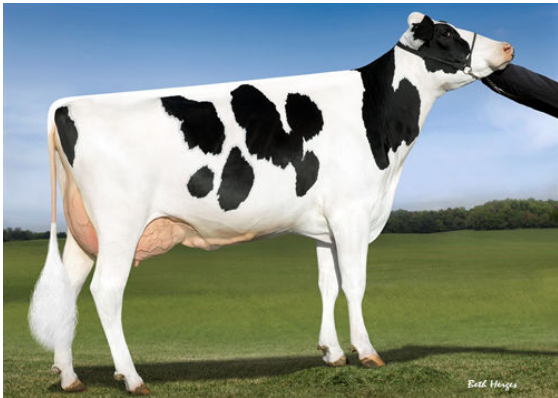
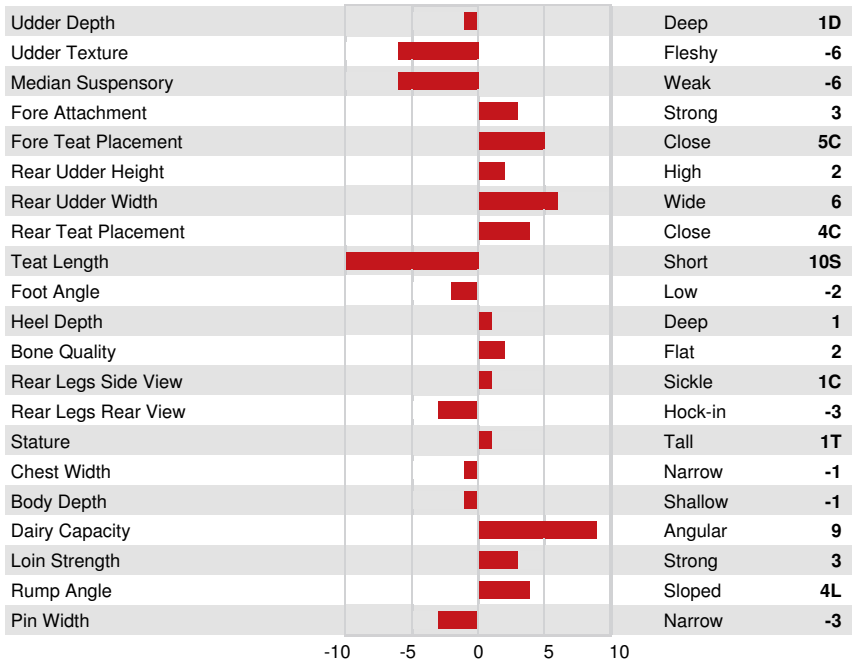
Herd Life	101	Calf Immunity	95
Somatic Cell Score	102	Calving Ability	106
Daughter Fertility	107	Daughter Calving Ability	107
Body Condition Score	94	Milking Speed	102
Mastitis Resistance	100	Milking Temperament	96
Lactation Persistence	98	Metabolic Disease Resistance	101

CONFORMATION

22 Herds 143 Daughters 88% Rel

GMACE 24*APR

Conformation	0	Dairy Strength	4
Mammary System	-3	Rump	5
Feet & Legs	3		



OCD SUPERSIRE 9882
GRANDDAM



AMMON-PEACHEY SHANA
FOURTH DAM



AMMON-PEACHEY SHANA
FOURTH DAM