



PROGENESIS TOPNOTCH  
 SILVERRIDGE V DUKE EMAIL VG-87-5YR-CAN 4\*  
 S-S-I MONTROSS DUKE  
 SILVERRIDGE V SSHOT EARRING EX-90-6YR-CAN 10\*  
 COGENT SUPERSHOT  
 SILVERRIDGE V MUNITION EARWIG EX-90-5E-CAN 5\*

GLPI +3571 PRO\$ 2227

DPF RDF BLF CNF XIF BYF MWF CVF HH1F HH2F HH3F HH4F HH5F HH6F HCDF HMWF

Reg. #: HOCANM12857528 aAa: 534126 DMS: 345  
 Born: 04/18/2018 Kappa Casein: AB Beta Casein: A2A2

PRODUCTION 119 Herds 471 Daughters 97% Rel GEBV 24\*APR

Milk kg	Fat kg	Fat %	Protein kg	Protein %
774	103	+0.60	66	+0.31
Feed Efficiency	BMR	Methane Efficiency		
92	100	107		

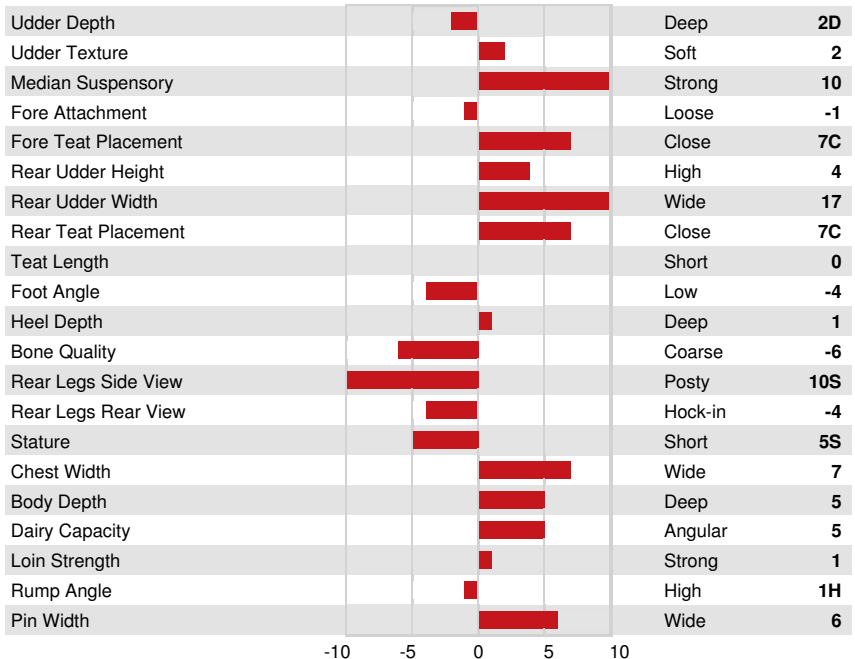
Daughter Average (ME) Milk 12,849 kg Fat 567 kg Protein 440 kg

HEALTH & REPRODUCTION Immunity 111

Herd Life	107	Calf Immunity	105
Somatic Cell Score	107	Calving Ability	101
Daughter Fertility	104	Daughter Calving Ability	104
Body Condition Score	106	Milking Speed	96
Mastitis Resistance	109	Milking Temperament	98
Lactation Persistency	98	Metabolic Disease Resistance	112

CONFORMATION 106 Herds 380 Daughters 95% Rel GEBV 24\*APR

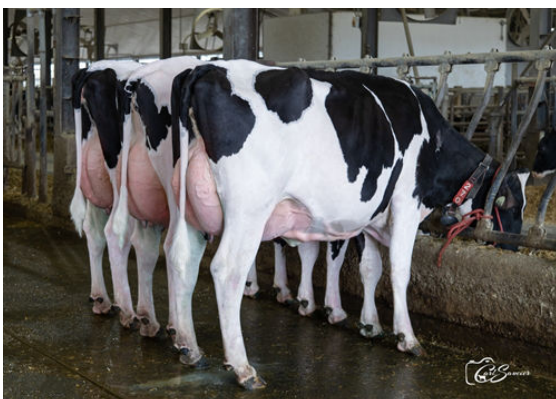
Conformation	5	Dairy Strength	8
Mammary System	6	Rump	3
Feet & Legs	-6	GP or Better %	73



PROGENESIS EINSTEIN WIMZY DAUGHTER



HAH ALICE DAUGHTER



EINSTEIN DAUGHTER GROUP

L to R - BEAUCOISE EINSTEIN ELIAS, BEAUCOISE EINSTEIN PIKKY, BEAUCOISE EINSTEIN PIRKI