



WESTCOAST PERSEUS  
 OCD SPRING SNAPPY 34275 EX-90-3E-CAN  
 WESTENRADE SPRING  
 OCD SUPERSIRE SNAPPY GP-80-3YR-USA  
 SEAGULL-BAY SUPERSIRE  
 OCD ROBUST SHIMMER EX-90-2E-USA DOM

**GMACE LPI +3283 PRO\$ 1779**

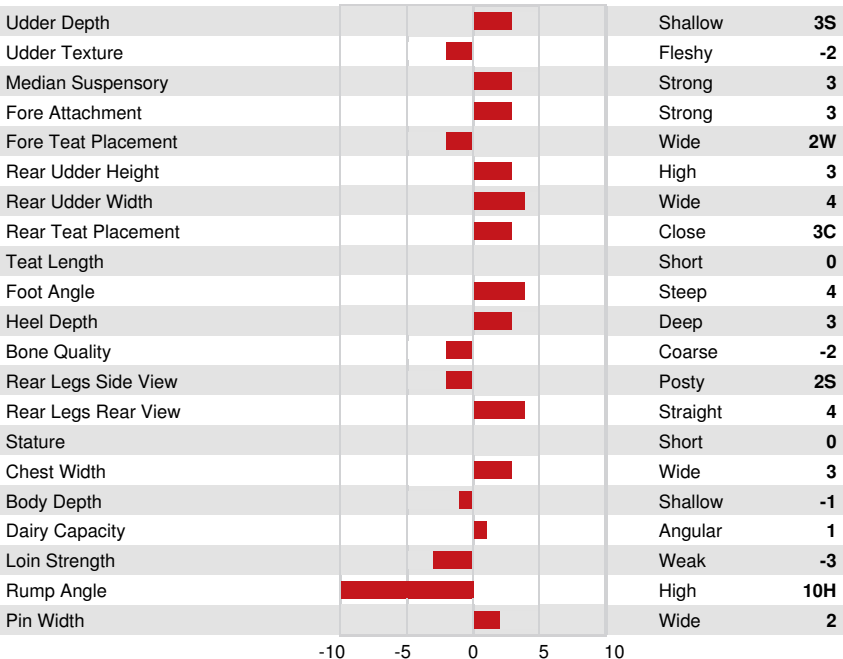
DPF RDF BLF CNF BYF MWC CVF HH1F HH2F HH3F HH4F HH5C HH6F HCDF HMWC

Reg. #: HO840M3142935459 aAa: 315246 DMS: 345  
 Born: 10/18/2017 Kappa Casein: AB Beta Casein: A2A2

PRODUCTION			GMACE 24*APR	
Milk kg	Fat kg	Fat %	Protein kg	Protein %
683	33	+0.05	57	+0.29
Feed Efficiency	BMR	Methane Efficiency		
103	97	105		

HEALTH & REPRODUCTION		Immunity	113
Herd Life	106	Calf Immunity	106
Somatic Cell Score	109	Calving Ability	102
Daughter Fertility	105	Daughter Calving Ability	105
Body Condition Score	105	Milking Speed	86
Mastitis Resistance	107	Milking Temperament	98
Lactation Persistence	103	Metabolic Disease Resistance	101

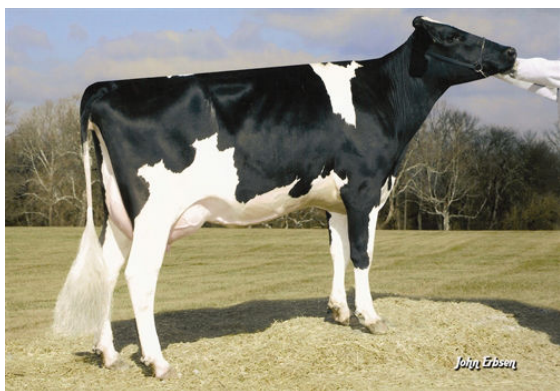
CONFORMATION		GMACE 24*APR	
Conformation	2	Dairy Strength	1
Mammary System	3	Rump	-7
Feet & Legs	1		



AMMON-PEACHEY SHANA  
 FOURTH DAM



AMMON-PEACHEY SHANA  
 FOURTH DAM



PINE-TREE MARTHA SHEEN TY  
 FIFTH DAM