



WESTCOAST LIGHTHOUSE
 WALNUTLAWN ABBOTT BREE EX-90-4YR-CAN 10*
 WILLSBRO ABBOTT
 WALNUTLAWN DOORMAN BREANNA VG-88-4YR-CAN 4*
 VAL-BISSON DOORMAN
 SANDY-VALLEY ATWD BRADY EX-90-5YR-CAN 2*

GLPI +3267 PRO\$ 1683
 DPF RDF BLF CNF XIF BYF MWF CVF HH1F HH2F HH3F HH4F HH5C HH6F HCDC HMWF

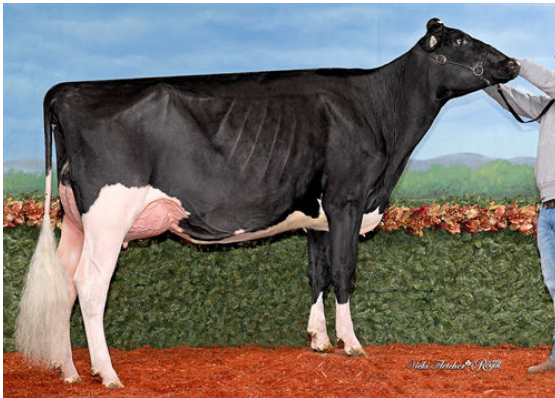
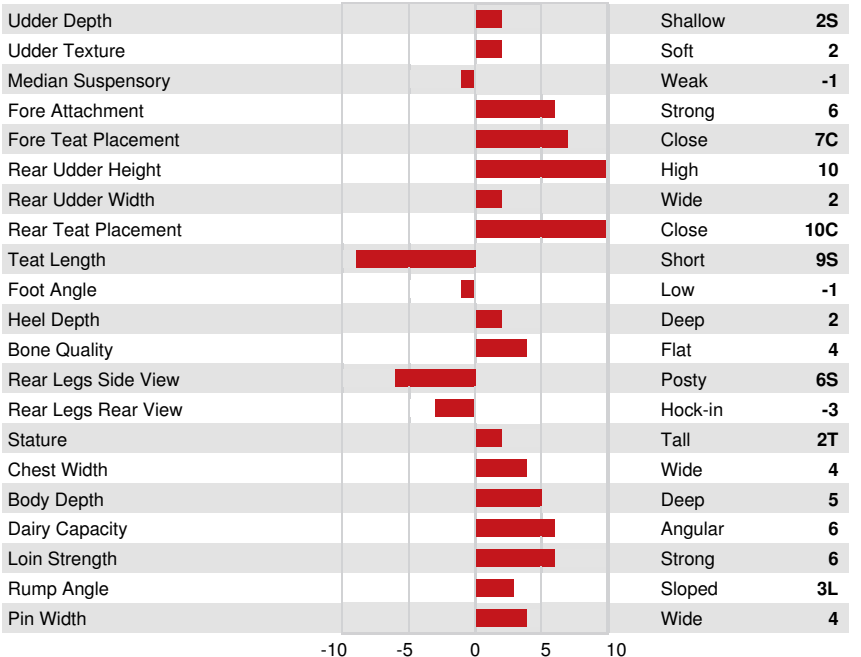
Reg. #: HOCANM12508193 aAa: 435126 DMS: 246
 Born: 01/04/2018 Kappa Casein: AA Beta Casein: A2A2

PRODUCTION			GEBV 24* APR	
Milk kg	Fat kg	Fat %	Protein kg	Protein %
1788	28	-0.32	66	+0.04
Feed Efficiency	BMR	Methane Efficiency		
105	91	107		

Daughter Average (ME) Milk 13,232 kg Fat 520 kg Protein 435 kg

HEALTH & REPRODUCTION		Immunity
Herd Life	101	Calf Immunity 104
Somatic Cell Score	103	Calving Ability 101
Daughter Fertility	107	Daughter Calving Ability 101
Body Condition Score	100	Milking Speed 99
Mastitis Resistance	98	Milking Temperament 99
Lactation Persistency	102	Metabolic Disease Resistance 100

CONFORMATION		GEBV 24* APR	
Conformation	5	Dairy Strength	8
Mammary System	2	Rump	7
Feet & Legs	1	GP or Better %	79



MOSNANG BRIDGESTONE LIVE WIRE
 DAUGHTER



BRIDGESTONE DAUGHTER GROUP
 L TO R - MICHERET ARDY BRIDGESTONE, MICHERET MYSOFT
 BRIDGESTONE



MICHERET ARDY BRIDGESTONE
 DAUGHTER