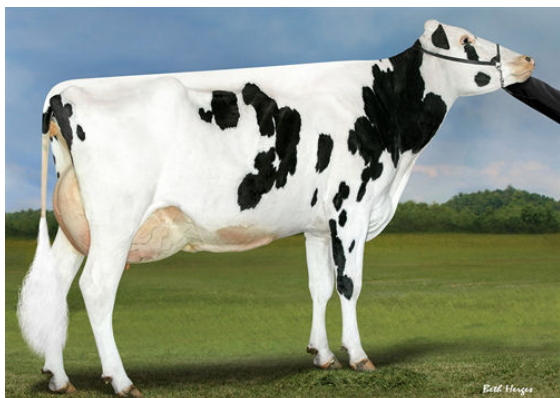




WESTCOAST GUARANTEE  
 PROGENESIS DUKE MELEE VG-87-5YR-USA 8\*  
 S-S-I MONTROSS DUKE  
 PEAK BOMBERO MAXIMA VG-87-6YR-USA DOM  
 RICHMOND-FD EL BOMBERO  
 BRYHILL RANSOM MARQUISE GP-83-2YR-USA DOM 1\*



PROGENESIS DUKE MELEE  
DAM



PEAK BOMBERO MAXIMA  
GRANDDAM

**GLPI +3091 PRO\$ 1816**  
 DPF RDF BLF CNF BYF MWF CVF HH1F HH2F HH3F HH4F HH5F HH6F HCDF HMWF

Reg. #: HOCANM13024672 aAa: 243156 DMS: 234  
 Born: 01/16/2018 Kappa Casein: AA Beta Casein: A1A2

**PRODUCTION** 95 Herds 235 Daughters 96% Rel GEBV 24\*APR

Milk kg	Fat kg	Fat %	Protein kg	Protein %
1225	88	+0.32	70	+0.21
Feed Efficiency	BMR	Methane Efficiency		
100	97	98		

Daughter Average (ME) Milk 12,859 kg Fat 540 kg Protein 427 kg

**HEALTH & REPRODUCTION** Immunity 104

Herd Life	97	Calf Immunity	97
Somatic Cell Score	106	Calving Ability	98
Daughter Fertility	96	Daughter Calving Ability	106
Body Condition Score	95	Milking Speed	94
Mastitis Resistance	108	Milking Temperament	101
Lactation Persistence	96	Metabolic Disease Resistance	100

**CONFORMATION** 94 Herds 196 Daughters 93% Rel GEBV 24\*APR

Conformation	-3	Dairy Strength	-1
Mammary System	-4	Rump	1
Feet & Legs	1	GP or Better %	59

