



MAVERICK-I CRUSH

OH-RIVER-SYC MOGAL BRYLAN VG-87-4YR-USA

MOUNTFIELD SSI DCY MOGUL

OH-RIVER-SYC MRDN BILLIE EX-91-4YR-USA

SULLY HART MERIDIAN

SANDY-VALLEY ATWD BARBIE EX-91-5YR-USA

GLPI +2725 PRO\$ 72

EX-92-CAN DPF RDF BLF CNF BYF MWF CVF HH1F HH2F HH3F HH4F HH5C HH6F HCDF HMWF

Reg. #: HO840M3135145001

aAa: 324165

DMS: 126

Born: 03/10/2017

Kappa Casein: BE

Beta Casein: A1A2

PRODUCTION 684 Herds 1720 Daughters 99% Rel **GEBV 24*APR**

Milk kg	Fat kg	Fat %	Protein kg	Protein %
-202	-31	-0.20	-9	-0.02
Feed Efficiency	BMR	Methane Efficiency		
97	97	103		

Daughter Average (ME) Milk **12,928 kg** Fat **503 kg** Protein **416 kg**

HEALTH & REPRODUCTION **Immunity 91**

Herd Life	101	Calf Immunity	106
Somatic Cell Score	97	Calving Ability	94
Daughter Fertility	100	Daughter Calving Ability	99
Body Condition Score	91	Milking Speed	103
Mastitis Resistance	95	Milking Temperament	105
Lactation Persistence	97	Metabolic Disease Resistance	91

CONFORMATION 570 Herds 1470 Daughters 98% Rel **GEBV 24*APR**

Conformation	13	Dairy Strength	4
Mammary System	11	Rump	3
Feet & Legs	12	GP or Better %	89

Udder Depth		Shallow	6S
Udder Texture		Soft	12
Median Suspensory		Strong	1
Fore Attachment		Strong	13
Fore Teat Placement		Close	10C
Rear Udder Height		High	6
Rear Udder Width		Wide	3
Rear Teat Placement		Close	2C
Teat Length		Short	2S
Foot Angle		Steep	4
Heel Depth		Deep	7
Bone Quality		Flat	16
Rear Legs Side View		Sickle	13C
Rear Legs Rear View		Straight	6
Stature		Tall	7T
Chest Width		Narrow	-5
Body Depth		Deep	5
Dairy Capacity		Angular	6
Loin Strength		Strong	6
Rump Angle		High	0
Pin Width		Wide	3

-10 -5 0 5 10



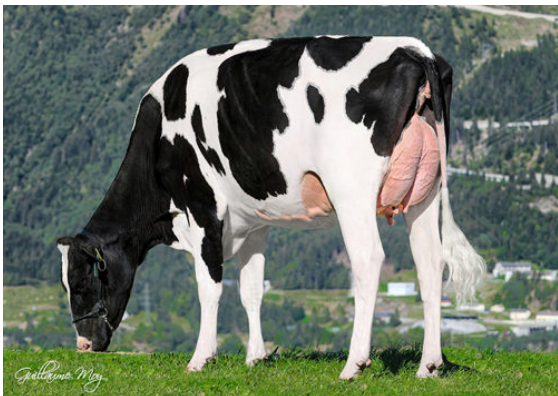
PANDA PURE GOLD RED

DAUGHTER



HOWARD-VIEW CRSBUL DISCODANCER

DAUGHTER



DG CRUSHABULL ATLANTIS

DAUGHTER