



ENDCO SUPERHERO
 SANDY-VALLEY COKISNCREAM EX-93-5YR-USA DOM
 SEAGULL-BAY SILVER
 SANDY-VALLEY CARROTCAKE EX-90-3YR-USA DOM
 SEAGULL-BAY SUPERSIRE
 LARCREST CAKE VG-87-3YR-USA DOM

GLPI +3113 PRO\$ 1755

VG-CAN DPF RDF BLF CNF BYF MWC CVF HH1F HH2F HH3F HH4F HH5F HH6F HCDF HMWC

Reg. #: HO840M3140616169 aAa: 426315 DMS: 246
 Born: 01/02/2017 Kappa Casein: BE Beta Casein: A1A2

PRODUCTION 131 Herds 312 Daughters 98% Rel GEBV 24*APR

Milk kg	Fat kg	Fat %	Protein kg	Protein %
509	80	+0.51	42	+0.19
Feed Efficiency	BMR	Methane Efficiency		
95	101	104		

Daughter Average (ME) Milk **13,120 kg** Fat **558 kg** Protein **442 kg**

HEALTH & REPRODUCTION Immunity **101**

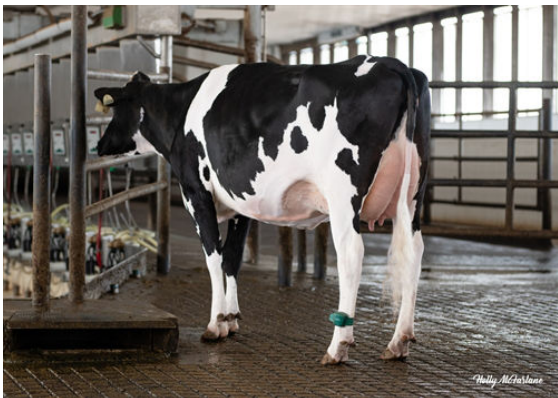
Herd Life	103	Calf Immunity	94
Somatic Cell Score	105	Calving Ability	100
Daughter Fertility	96	Daughter Calving Ability	105
Body Condition Score	102	Milking Speed	101
Mastitis Resistance	106	Milking Temperament	98
Lactation Persistence	101	Metabolic Disease Resistance	102

CONFORMATION 117 Herds 293 Daughters 96% Rel GEBV 24*APR

Conformation	0	Dairy Strength	-7
Mammary System	11	Rump	-14
Feet & Legs	-9	GP or Better %	65



CHALLENGER DAUGHTER GROUP
 DAUGHTERS AT SANDY-VALLEY



STANTONS CHALLENGER CHEERIO



PROGENESIS CHALLENGER EMBRACE