



SEAGULL-BAY SILVER
 STANTONS CAMEO APPEARANCE VG-85-2YR-CAN 9*
 BOLDI V S G ANTON
 STANTONS SHAMROCK COCO CHANEL EX-90-8YR-CAN 6*
 LADYS-MANOR PL SHAMROCK
 STANTONS FREDDIE CAMEO EX-91-3E-CAN 62*

GLPI +2979 PRO\$ 1099
 VG-CAN DPF BLF CNF XIF BYF MWF CVF HH1F HH2F HH3F HH4F HH5F HH6F HCDF HMWF

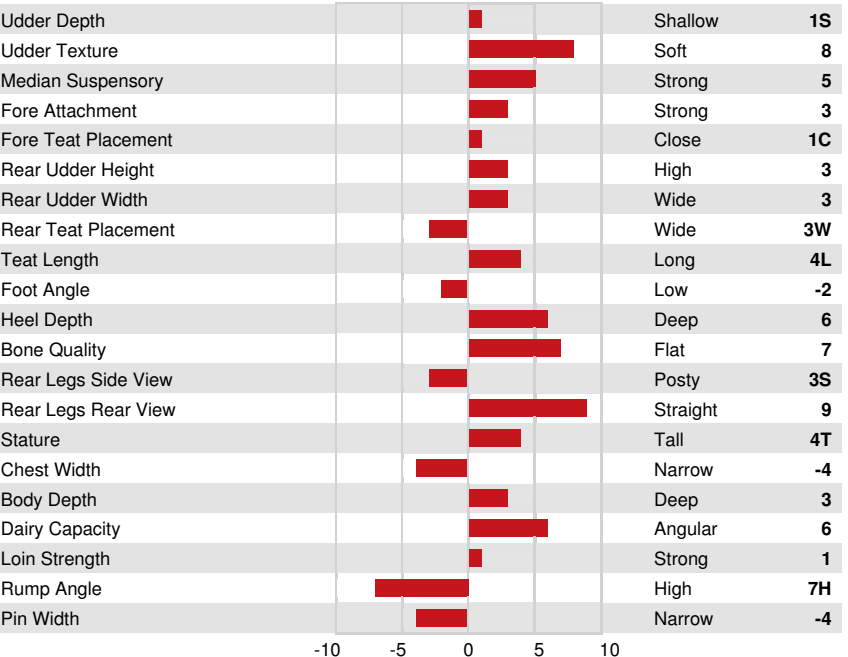
Reg. #: HO840M3135087039 aAa: 432516 DMS: 345
 Born: 01/12/2016 Kappa Casein: AB Beta Casein: A2A2

PRODUCTION		654 Herds	1248 Daughters	98% Rel	GEBV 24*APR	
Milk kg	Fat kg			Fat %	Protein kg	Protein %
1216	56			+0.07	40	-0.01
Feed Efficiency	BMR			Methane Efficiency		
102	98			111		

Daughter Average (ME) Milk 13,151 kg Fat 529 kg Protein 422 kg

HEALTH & REPRODUCTION		Immunity 92	
Herd Life	98	Calf Immunity	103
Somatic Cell Score	94	Calving Ability	99
Daughter Fertility	93	Daughter Calving Ability	100
Body Condition Score	92	Milking Speed	102
Mastitis Resistance	92	Milking Temperament	103
Lactation Persistency	106	Metabolic Disease Resistance	94

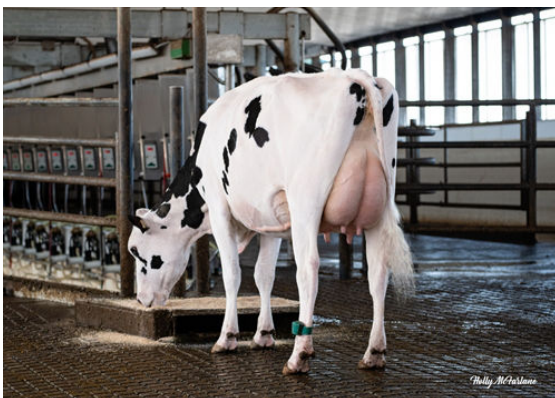
CONFORMATION		482 Herds	848 Daughters	97% Rel	GEBV 24*APR	
Conformation	6	Dairy Strength	3			
Mammary System	7	Rump	-6			
Feet & Legs	5	GP or Better %	70			



DANDYLAND ATEAM LALA
 DAUGHTER



DUSOLEIL ATEAM SCARLETTE



FISHERVALE ATEAM OPRAH