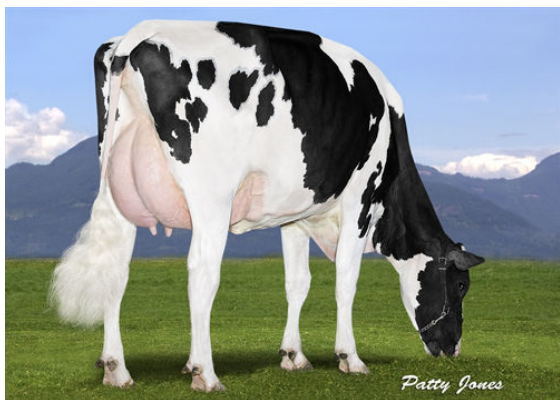




DE-SU BKM MCCUTCHEN 1174
 MS CHASSITY OBS CLAIRE VG-87-2YR-CAN 24*
 DE-SU OBSERVER
 REGANCREST CHASSITY TY TL EX-92-4YR-USA GMD DOM 35*
 PICSTON SHOTTLE
 REGANCREST CINDERELLA EX-92-2E-USA GMD DOM 7*



WEDGWOOD C G DELLIA



MAPEL WOOD CGAIN LOTTO P



STANTONS CG ERIKA

GLPI +2506 PRO\$ 335
 VG-CAN SP DPF RDF BLF CNF BYF CVF HH1F HH2F HH3F HH4F HH5F HH6F HCDF HMWF

Reg. #: HOCANM11696699 aAa: 342156 DMS: 123,126
 Born: 02/13/2013 Kappa Casein: AA Beta Casein: A2A2

PRODUCTION 1877 Herds 4367 Daughters 99% Rel GEBV 24*APR

Milk kg	Fat kg	Fat %	Protein kg	Protein %
1493	45	-0.11	26	-0.19
Feed Efficiency	BMR	Methane Efficiency		
107	92	97		

Daughter Average (ME) Milk 13,225 kg Fat 518 kg Protein 414 kg

HEALTH & REPRODUCTION Immunity 98

Herd Life	90	Calf Immunity	106
Somatic Cell Score	102	Calving Ability	96
Daughter Fertility	95	Daughter Calving Ability	98
Body Condition Score	92	Milking Speed	93
Mastitis Resistance	101	Milking Temperament	103
Lactation Persistence	108	Metabolic Disease Resistance	94

CONFORMATION 1652 Herds 3772 Daughters 99% Rel GEBV 24*APR

Conformation	-5	Dairy Strength	7
Mammary System	-6	Rump	-4
Feet & Legs	-8	GP or Better %	66

