



COYNE-FARMS JABIR
 VELTHUIS SUPERSONIC ALYSSA VG-87-2YR-CAN 9*
 MISTY SPRINGS SUPERSONIC
 VELTHUIS SG MOM ALESIA VG-87-2YR-CAN 23*
 LONG-LANGS OMAN OMAN
 ALLYNDALDE-I GOLDWYN ALBANY VG-87-2YR-CAN 14*

GLPI +3135 PRO\$ 1399
 EX-90-CAN DPF MFF RDF BLF CNF XIF BYF MWF HH1F HH2F HH3F HH4F HH5F HH6F HCDF
 CVF HMWF

Reg. #: HOCANM108798853 aAa: 345126 DMS: 246
 Born: 01/20/2014 Kappa Casein: BB Beta Casein: A1A2

PRODUCTION 476 Herds 927 Daughters 99% Rel GEBV 24*APR

Milk kg	Fat kg	Fat %	Protein kg	Protein %
321	53	+0.34	32	+0.16
Feed Efficiency	BMR	Methane Efficiency		
99	95	95		

Daughter Average (ME) Milk **12,138 kg** Fat **501 kg** Protein **403 kg**

HEALTH & REPRODUCTION Immunity 106

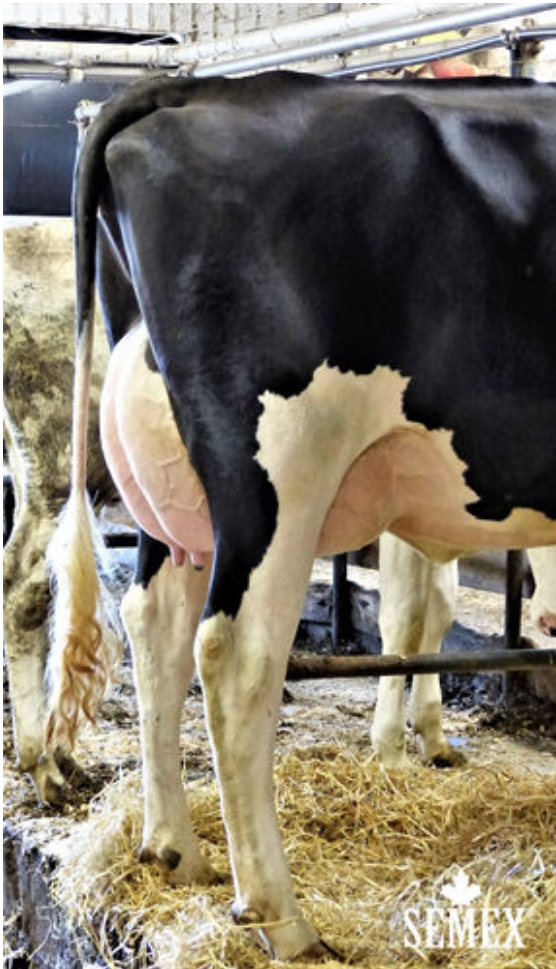
Herd Life	108	Calf Immunity	104
Somatic Cell Score	104	Calving Ability	100
Daughter Fertility	104	Daughter Calving Ability	103
Body Condition Score	105	Milking Speed	103
Mastitis Resistance	104	Milking Temperament	101
Lactation Persistence	100	Metabolic Disease Resistance	98

CONFORMATION 464 Herds 803 Daughters 97% Rel GEBV 24*APR

Conformation	-1	Dairy Strength	2
Mammary System	-3	Rump	0
Feet & Legs	1	GP or Better %	62

Udder Depth		Deep	0
Udder Texture		Soft	1
Median Suspensory		Strong	1
Fore Attachment		Loose	-2
Fore Teat Placement		Wide	1W
Rear Udder Height		Low	-9
Rear Udder Width		Wide	2
Rear Teat Placement		Close	2C
Teat Length		Short	4S
Foot Angle		Low	-5
Heel Depth		Shallow	0
Bone Quality		Coarse	-5
Rear Legs Side View		Sickle	3C
Rear Legs Rear View		Straight	1
Stature		Short	0
Chest Width		Wide	5
Body Depth		Deep	1
Dairy Capacity		Non-Angular	-3
Loin Strength		Strong	2
Rump Angle		High	2H
Pin Width		Narrow	0

-10 -5 0 5 10



GUSNIS ARMOUR MACY