



EMERALD-ACR-SA T-BAXTER
 DE-SU OMAN 6121 VG-86-2YR-USA GMD DOM 7*
 O-BEE MANFRED JUSTICE
 DE-SU BW MARSHAL GEORGIA EX-90-2E-USA GMD DOM
 MARA-THON BW MARSHALL
 DE-SU PATRON GOLD EX-90-2E-USA GMD DOM

GLPI +2370 PRO\$ -237

GP-CAN EXTRA BRC BLF CNF XIF BYF CVF HH1F HH2F HH3F HH4F HH5F HH6F HCDF HMWF

Reg. #: HOUSAM64700361 aAa: 435126 DMS: 345,234
 Born: 02/27/2008 Kappa Casein: AA Beta Casein: A2A2

PRODUCTION 908 Herds 1524 Daughters 99% Rel GEBV 24*APR

Milk kg	Fat kg	Fat %	Protein kg	Protein %
111	22	+0.14	0	-0.03
Feed Efficiency	BMR	Methane Efficiency		
103	98	86		

Daughter Average (ME) Milk 11,979 kg Fat 476 kg Protein 379 kg

HEALTH & REPRODUCTION Immunity 85

Herd Life	96	Calf Immunity	89
Somatic Cell Score	96	Calving Ability	100
Daughter Fertility	95	Daughter Calving Ability	97
Body Condition Score	100	Milking Speed	101
Mastitis Resistance	101	Milking Temperament	100
Lactation Persistence	85	Metabolic Disease Resistance	99

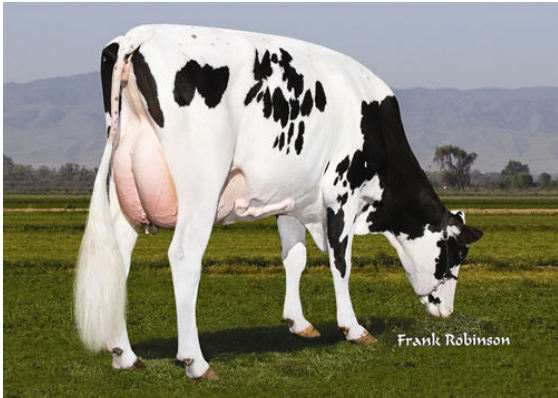
CONFORMATION 813 Herds 1400 Daughters 98% Rel GEBV 24*APR

Conformation	-3	Dairy Strength	1
Mammary System	0	Rump	8
Feet & Legs	-14	GP or Better %	59

Udder Depth		Deep	3D
Udder Texture		Soft	2
Median Suspensory		Strong	2
Fore Attachment		Loose	-1
Fore Teat Placement		Wide	6W
Rear Udder Height		High	6
Rear Udder Width		Wide	4
Rear Teat Placement		Wide	2W
Teat Length		Short	3S
Foot Angle		Low	-5
Heel Depth		Shallow	-7
Bone Quality		Coarse	-11
Rear Legs Side View		Sickle	5C
Rear Legs Rear View		Hock-in	-11
Stature		Tall	4T
Chest Width		Wide	2
Body Depth		Deep	3
Dairy Capacity		Non-Angular	-3
Loin Strength		Strong	2
Rump Angle		Sloped	5L
Pin Width		Wide	10



LEMAVIE BOWMAN KATRINA



HILLTOP BOWMAN 9422



HILLTOP-LLC BOWMAN 4584

-10 -5 0 5 10