



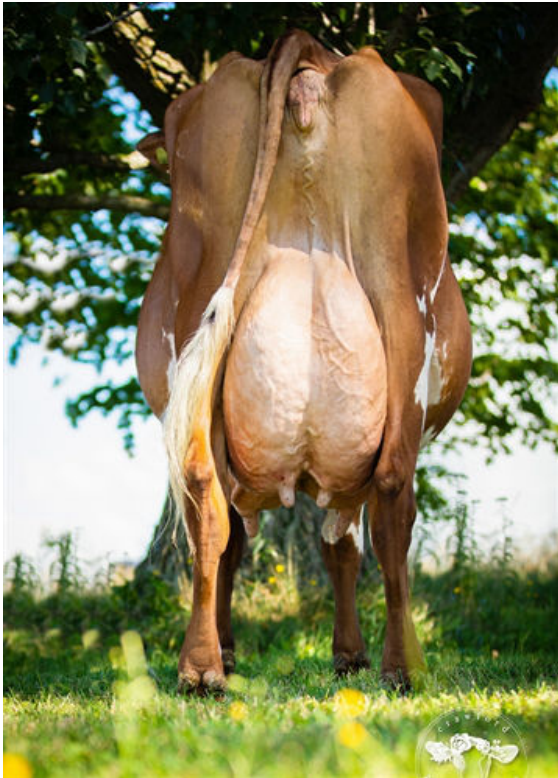
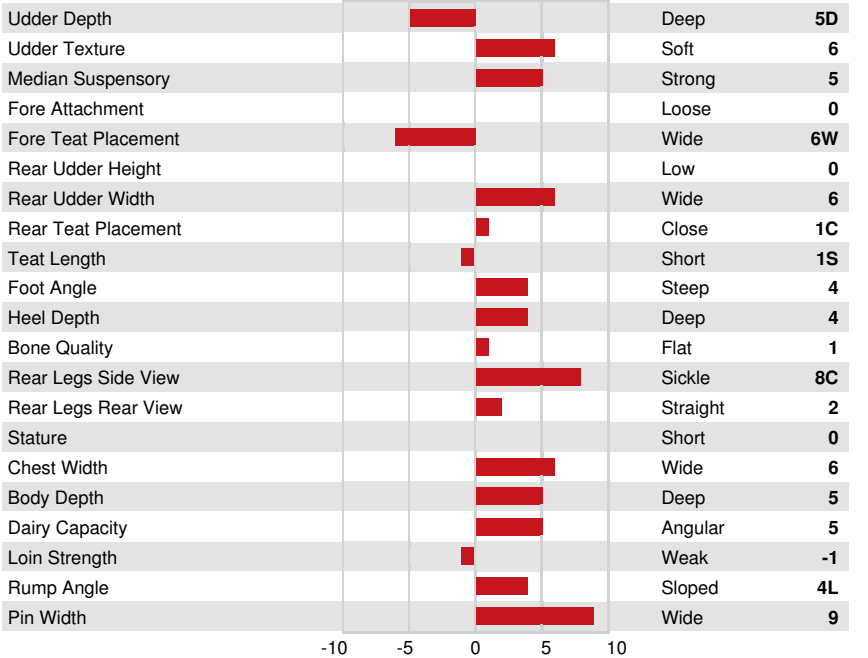
DES COTEAUX RUBYWAY
 MARBRAE ARBITER'S CATALINA EX-90-2E-CAN 1*
 RUISSEAU CLAIR ARBITER
 MARBRAE OBLIQUE'S CAMBRIDGE EX-92-5E-CAN 2*
 JELYCA OBLIQUE
 MARBRAE KINDLE'S CAMBER GP-82-2YR-CAN

GPA LPI +3142 PRO\$ 1395

TF				AH1F AH2F AHCF	
Reg. #: AYCANM120893455	aAa: 342516	DMS:			
Born: 10/04/2021	Kappa Casein: AA	Beta Casein: A1A2			
PRODUCTION		G Herds	G Daughters	62% Rel	GPA 24*APR
Milk kg	Fat kg	Fat %	Protein kg	Protein %	
1031	58	+0.18	40	+0.05	

HEALTH & REPRODUCTION				Immunity 102	
Herd Life	104	Calf Immunity	102		
Somatic Cell Score	102	Calving Ability	96		
Daughter Fertility	101	Daughter Calving Ability	99		
Body Condition Score	101	Milking Speed	104		
Mastitis Resistance	103	Milking Temperament	104		
Lactation Persistency	107	Metabolic Disease Resistance	99		

CONFORMATION		G Herds	G Daughters	52% Rel	GPA 24*APR
Conformation	6	Dairy Strength	7		
Mammary System	2	Rump	7		
Feet & Legs	7				



MARBRAE OBLIQUE'S CAMBRIDGE
 GRANDDAM



MARBRAE ARBITER'S CATALINA

DAM